

DATASHEET

FREM1 Rabbit Polyclonal Antibody

CAT. NO. APA15662

KEY FEATURES

Target	FREM1	Source / Host	Rabbit
Reactivity	Human, Mouse, Rat	Clonality	Polyclonal
Applications	WB	Conjugation	Unconjugated
Form / Buffer	Liquid in 0.42% Potassium phosphate, 0.87% Sodium chloride, pH 7.3, 30% glycerol, and 0.01% sodium azide.		Storage at -20°C

BACKGROUND

Extracellular matrix protein that plays a role in epidermal differentiation and is required for epidermal adhesion during embryonic development.

APPLICATION

To ensure optimal assay performance, AREX recommends conducting reagent titration tailored to each testing system for optimal detection results.

WB	1:500 - 1:2000
----	----------------

*Results are sample-specific. Please refer to your local assay conditions and test parameters for reference.

PRODUCT OVERVIEW

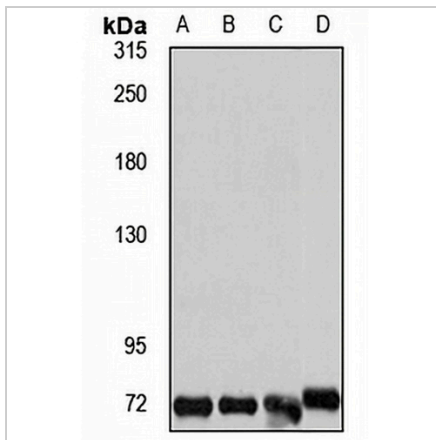
Description	Rabbit polyclonal antibody to FREM1
Specificity	Recognizes endogenous levels of FREM1 protein
Antibody Type	Primary antibody
Immunogen	Recombinant fusion protein of human FREM1. The exact sequence is proprietary.
Purification	The antibody was purified by immunogen affinity chromatography.
Molecular Weight	Predicted: 25; Observed: 72 kD
Form/Buffer	Liquid in 0.42% Potassium phosphate, 0.87% Sodium chloride, pH 7.3, 30% glycerol, and 0.01% sodium azide.
Alternative Names	C9orf143; C9orf145; C9orf154; FRAS1-related extracellular matrix protein 1; Protein QBRICK
Gene Symbol	FREM1
Entrez Gene	158326(Human); 329872(Mouse)
SwissProt	Q5H8C1(Human); Q684R7(Mouse)

*AREX continuously optimizes our products. Webpage content may not reflect the latest updates. For inquiries, please contact info@arexbio.com or your local distributor.

*Clone Number, Reactivity, Source/Host and Clonality can be found in the product name and Key Features section above.

DATASHEET**FREM1 Rabbit Polyclonal Antibody**

CAT. NO. APA15662

DATA

Western blot analysis of FREM1 expression in K562 (A), HepG2 (B), mouse kidney (C), rat liver (D) whole cell lysates. (Predicted band size: 25; 42; 80; 244 kD; Observed band size: 72 kD)

STORAGE

Store at 4°C short term. For long term storage, store at -20°C, avoiding freeze/thaw cycles.

NOTE

For Research Use Only. Not for diagnostic, therapeutics, prophylactic or in vivo use.