

## DATASHEET

# FUCA1 Rabbit Polyclonal Antibody

CAT. NO. APA15667

### KEY FEATURES

|               |   |               |                     |
|---------------|---|---------------|---------------------|
| Target        | FUCA1   | Source / Host | Rabbit              |
| Reactivity    | Human, Mouse, Rat   | Clonality     | Polyclonal          |
| Applications  | WB  | Conjugation   | Unconjugated        |
| Form / Buffer | Liquid in 0.42% Potassium phosphate, 0.87% Sodium chloride, pH 7.3, 30% glycerol, and 0.01% sodium azide. |               | Storage<br>at -20°C |

### BACKGROUND

Alpha-L-fucosidase is responsible for hydrolyzing the alpha-1,6-linked fucose joined to the reducing-end N-acetylglucosamine of the carbohydrate moieties of glycoproteins.

### APPLICATION

To ensure optimal assay performance, AREX recommends conducting reagent titration tailored to each testing system for optimal detection results.

|    |                |
|----|----------------|
| WB | 1:500 - 1:2000 |
|----|----------------|

\*Results are sample-specific. Please refer to your local assay conditions and test parameters for reference.

### PRODUCT OVERVIEW

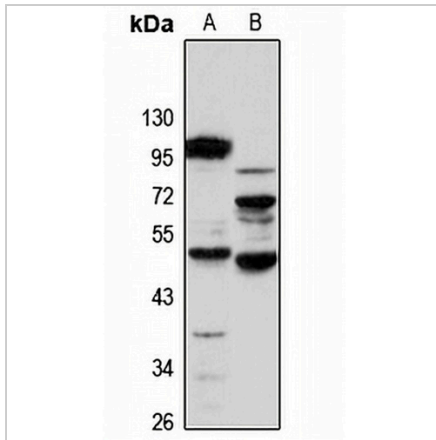
|                   |   |
|-------------------|---|
| Description       | Rabbit polyclonal antibody to FUCA1   |
| Specificity       | Recognizes endogenous levels of FUCA1 protein   |
| Antibody Type     | Primary antibody  |
| Immunogen         | Recombinant fusion protein of human FUCA1. The exact sequence is proprietary.                             |
| Purification      | The antibody was purified by immunogen affinity chromatography.   |
| Molecular Weight  | Predicted: 53 kD; Observed: 53 kD   |
| Form/Buffer       | Liquid in 0.42% Potassium phosphate, 0.87% Sodium chloride, pH 7.3, 30% glycerol, and 0.01% sodium azide. |
| Alternative Names | Tissue alpha-L-fucosidase; Alpha-L-fucosidase I; Alpha-L-fucoside fucohydrolase 1; Alpha-L-fucosidase 1   |
| Gene Symbol       | FUCA1   |
| Entrez Gene       | 2517(Human); 71665(Mouse); 24375(Rat)   |
| SwissProt         | P04066(Human); Q99LJ1(Mouse); P17164(Rat)   |

\*AREX continuously optimizes our products. Webpage content may not reflect the latest updates. For inquiries, please contact [info@arexbio.com](mailto:info@arexbio.com) or your local distributor.

\*Clone Number, Reactivity, Source/Host and Clonality can be found in the product name and Key Features section above.

**DATASHEET****FUCA1 Rabbit Polyclonal Antibody**

CAT. NO. APA15667

**DATA**

Western blot analysis of FUCA1 expression in mouse kidney (A), rat liver (B) whole cell lysates. (Predicted band size: 53 kD; Observed band size: 53 kD)

**STORAGE**

Store at 4°C short term. For long term storage, store at -20°C, avoiding freeze/thaw cycles.

**NOTE**

For Research Use Only. Not for diagnostic, therapeutics, prophylactic or in vivo use.