

**DATASHEET**

**FUT7 Rabbit Polyclonal Antibody**

CAT. NO. APA15668

**KEY FEATURES**

Target	FUT7	Source / Host	Rabbit
Reactivity	Human, Mouse, Rat	Clonality	Polyclonal
Applications	WB	Conjugation	Unconjugated
Form / Buffer	Liquid in 0.42% Potassium phosphate, 0.87% Sodium chloride, pH 7.3, 30% glycerol, and 0.01% sodium azide.		Storage at -20°C

**BACKGROUND**

Catalyzes the transfer of L-fucose, from a guanosine diphosphate-beta-L-fucose, to the N-acetyl glucosamine (GlcNAc) of a distal alpha2,3 sialylated lactosamine unit of a glycoprotein or a glycolipid-linked sialopolylactosamines chain through an alpha-1,3 glycosidic linkage and participates in the final fucosylation step in the biosynthesis of the sialyl Lewis X (sLe(x)), a carbohydrate involved in cell and matrix adhesion during leukocyte trafficking and fertilization of a distal alpha2,3 sialylated lactosamine unit of a glycoprotein or a glycolipid-linked sialopolylactosamines chain through an alpha-1,3 glycosidic linkage and participates in the final fucosylation step in the biosynthesis of the sialyl Lewis X (sLe(x)),

**APPLICATION**

To ensure optimal assay performance, AREX recommends conducting reagent titration tailored to each testing system for optimal detection results.

WB	1:500 - 1:2000
----	----------------

\*Results are sample-specific. Please refer to your local assay conditions and test parameters for reference.

**PRODUCT OVERVIEW**

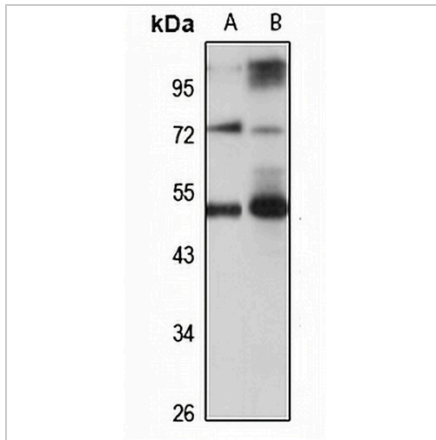
Description	Rabbit polyclonal antibody to FUT7
Specificity	Recognizes endogenous levels of FUT7 protein
Antibody Type	Primary antibody
Immunogen	KLH-conjugated synthetic peptide of human FUT7. The exact sequence is proprietary.
Purification	The antibody was purified by immunogen affinity chromatography.
Molecular Weight	Predicted: 39 kD; Observed: 50 kD
Form/Buffer	Liquid in 0.42% Potassium phosphate, 0.87% Sodium chloride, pH 7.3, 30% glycerol, and 0.01% sodium azide.
Alternative Names	Alpha-(1 3)-fucosyltransferase 7; Fucosyltransferase 7; Fucosyltransferase VII; Fuc-TVII; FucT-VII; Galactoside 3-L-fucosyltransferase; Selectin ligand synthase
Gene Symbol	FUT7
Entrez Gene	2529(Human); 14347(Mouse)
SwissProt	Q11130(Human); Q11131(Mouse)

\*AREX continuously optimizes our products. Webpage content may not reflect the latest updates. For inquiries, please contact [info@arexbio.com](mailto:info@arexbio.com) or your local distributor.

\*Clone Number, Reactivity, Source/Host and Clonality can be found in the product name and Key Features section above.

**DATASHEET****FUT7 Rabbit Polyclonal Antibody**

CAT. NO. APA15668

**DATA****STORAGE**

Store at 4°C short term. For long term storage, store at -20°C, avoiding freeze/thaw cycles.

**NOTE**

For Research Use Only. Not for diagnostic, therapeutics, prophylactic or in vivo use.