

DATASHEET

G0S2 Rabbit Polyclonal Antibody

CAT. NO. APA15673

KEY FEATURES

Target	G0S2	Source / Host	Rabbit
Reactivity	Human, Mouse, Rat	Clonality	Polyclonal
Applications	WB, IHC	Conjugation	Unconjugated
Form / Buffer	Liquid in 0.42% Potassium phosphate, 0.87% Sodium chloride, pH 7.3, 30% glycerol, and 0.01% sodium azide.		Storage at -20°C

BACKGROUND

Promotes apoptosis by binding to BCL2, hence preventing the formation of protective BCL2-BAX heterodimers.

APPLICATION

To ensure optimal assay performance, AREX recommends conducting reagent titration tailored to each testing system for optimal detection results.

WB	1:500 - 1:2000
IHC	1:50 - 1:200

*Results are sample-specific. Please refer to your local assay conditions and test parameters for reference.

PRODUCT OVERVIEW

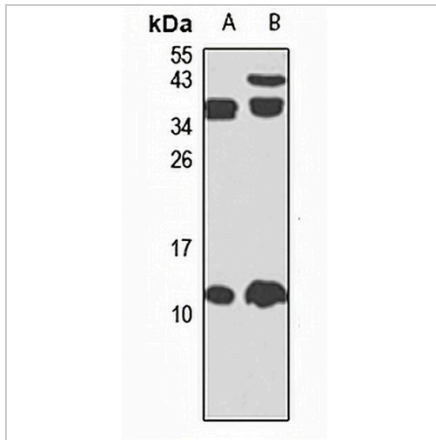
Description	Rabbit polyclonal antibody to G0S2
Specificity	Recognizes endogenous levels of G0S2 protein
Antibody Type	Primary antibody
Immunogen	KLH-conjugated synthetic peptide of human G0S2. The exact sequence is proprietary.
Purification	The antibody was purified by immunogen affinity chromatography.
Molecular Weight	Predicted: 11 kD; Observed: 11 kD
Form/Buffer	Liquid in 0.42% Potassium phosphate, 0.87% Sodium chloride, pH 7.3, 30% glycerol, and 0.01% sodium azide.
Alternative Names	G0/G1 switch protein 2; G0/G1 switch regulatory protein 2; Putative lymphocyte G0/G1 switch gene
Gene Symbol	G0S2
Entrez Gene	50486(Human); 14373(Mouse); 289388(Rat)
SwissProt	P27469(Human); Q61585(Mouse); Q5M840(Rat)

*AREX continuously optimizes our products. Webpage content may not reflect the latest updates. For inquiries, please contact info@arexbio.com or your local distributor.

*Clone Number, Reactivity, Source/Host and Clonality can be found in the product name and Key Features section above.

DATASHEET**G0S2 Rabbit Polyclonal Antibody**

CAT. NO. APA15673

DATA

Western blot analysis of G0S2 expression in mouse lung (A), mouse kidney (B) whole cell lysates. (Predicted band size: 11 kD; Observed band size: 11 kD)

STORAGE

Store at 4°C short term. For long term storage, store at -20°C, avoiding freeze/thaw cycles.

NOTE

For Research Use Only. Not for diagnostic, therapeutics, prophylactic or in vivo use.