

DATASHEET

G2E3 Rabbit Polyclonal Antibody

CAT. NO. APA15674

KEY FEATURES

Target	G2E3	Source / Host	Rabbit
Reactivity	Human, Mouse, Rat	Clonality	Polyclonal
Applications	WB	Conjugation	Unconjugated
Form / Buffer	Liquid in 0.42% Potassium phosphate, 0.87% Sodium chloride, pH 7.3, 30% glycerol, and 0.01% sodium azide.	Storage	at-20°C

BACKGROUND

E3 ubiquitin-protein ligase which accepts ubiquitin from an E2 ubiquitin-conjugating enzyme in the form of a thioester and then directly transfers the ubiquitin to targeted substrates. Essential in early embryonic development to prevent apoptotic death.

APPLICATION

To ensure optimal assay performance, AREX recommends conducting reagent titration tailored to each testing system for optimal detection results.

WB	1:500 - 1:2000
----	----------------

*Results are sample-specific. Please refer to your local assay conditions and test parameters for reference.

PRODUCT OVERVIEW

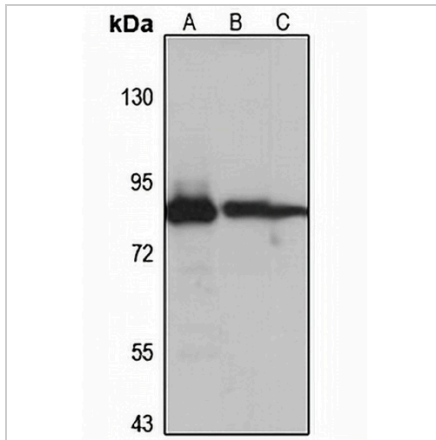
Description	Rabbit polyclonal antibody to G2E3
Specificity	Recognizes endogenous levels of G2E3 protein
Antibody Type	Primary antibody
Immunogen	Recombinant fusion protein of human G2E3. The exact sequence is proprietary.
Purification	The antibody was purified by immunogen affinity chromatography.
Molecular Weight	Predicted: 80 kD; Observed: 80 kD
Form/Buffer	Liquid in 0.42% Potassium phosphate, 0.87% Sodium chloride, pH 7.3, 30% glycerol, and 0.01% sodium azide.
Alternative Names	KIAA1333; G2/M phase-specific E3 ubiquitin-protein ligase
Gene Symbol	G2E3
Entrez Gene	55632(Human); 217558(Mouse)
SwissProt	Q7L622(Human); Q5RJY2(Mouse)

*AREX continuously optimizes our products. Webpage content may not reflect the latest updates. For inquiries, please contact info@arexbio.com or your local distributor.

*Clone Number, Reactivity, Source/Host and Clonality can be found in the product name and Key Features section above.

DATASHEET**G2E3 Rabbit Polyclonal Antibody**

CAT. NO. APA15674

DATA

Western blot analysis of G2E3 expression in HEK293T (A), mouse liver (B), rat testis (C) whole cell lysates. (Predicted band size: 80 kD; Observed band size: 80 kD)

STORAGE

Store at 4°C short term. For long term storage, store at -20°C, avoiding freeze/thaw cycles.

NOTE

For Research Use Only. Not for diagnostic, therapeutics, prophylactic or in vivo use.