

DATASHEET
G6Pase-beta Rabbit Polyclonal Antibody
CAT. NO. APA15675
KEY FEATURES

Target	G6Pase-beta	Source / Host	Rabbit
Reactivity	Human, Mouse, Rat	Clonality	Polyclonal
Applications	WB	Conjugation	Unconjugated
Form / Buffer	Liquid in 0.42% Potassium phosphate, 0.87% Sodium chloride, pH 7.3, 30% glycerol, and 0.01% sodium azide.		Storage at-20°C

BACKGROUND

Hydrolyzes glucose-6-phosphate to glucose in the endoplasmic reticulum. May form with the glucose-6-phosphate transporter (SLC37A4/G6PT) a ubiquitously expressed complex responsible for glucose production through glycogenolysis and gluconeogenesis. Probably required for normal neutrophil function.

APPLICATION

To ensure optimal assay performance, AREX recommends conducting reagent titration tailored to each testing system for optimal detection results.

WB	1:500 - 1:2000
----	----------------

*Results are sample-specific. Please refer to your local assay conditions and test parameters for reference.

PRODUCT OVERVIEW

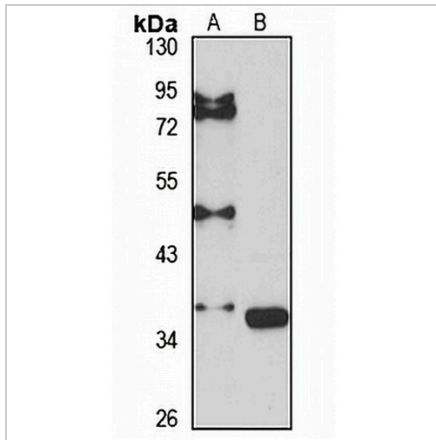
Description	Rabbit polyclonal antibody to G6Pase-beta
Specificity	Recognizes endogenous levels of G6Pase-beta protein
Antibody Type	Primary antibody
Immunogen	KLH-conjugated synthetic peptide of human G6Pase-beta. The exact sequence is proprietary.
Purification	The antibody was purified by immunogen affinity chromatography.
Molecular Weight	Predicted: 38 kD; Observed: 37 kD
Form/Buffer	Liquid in 0.42% Potassium phosphate, 0.87% Sodium chloride, pH 7.3, 30% glycerol, and 0.01% sodium azide.
Alternative Names	UGRP; Glucose-6-phosphatase 3; G-6-Pase 3; G6Pase 3; Glucose-6-phosphatase beta; G6Pase-beta; Ubiquitous glucose-6-phosphatase catalytic subunit-related protein
Gene Symbol	G6PC3
Entrez Gene	92579(Human); 68401(Mouse); 303565(Rat)
SwissProt	Q9BUM1(Human); Q6NSQ9(Mouse); Q6AZ83(Rat)

*AREX continuously optimizes our products. Webpage content may not reflect the latest updates. For inquiries, please contact info@arexbio.com or your local distributor.

*Clone Number, Reactivity, Source/Host and Clonality can be found in the product name and Key Features section above.

DATASHEET**G6Pase-beta Rabbit Polyclonal Antibody**

CAT. NO. APA15675

DATA

Western blot analysis of G6Pase-beta expression in HeLa (A), mouse kidney (B) whole cell lysates. (Predicted band size: 38 kD; Observed band size: 37 kD)

STORAGE

Store at 4°C short term. For long term storage, store at -20°C, avoiding freeze/thaw cycles.

NOTE

For Research Use Only. Not for diagnostic, therapeutics, prophylactic or in vivo use.