

DATASHEET

GAA Rabbit Polyclonal Antibody

CAT. NO. APA15676

KEY FEATURES

Target	GAA	Source / Host	Rabbit
Reactivity	Human, Mouse, Rat	Clonality	Polyclonal
Applications	WB, IP	Conjugation	Unconjugated
Form / Buffer	Liquid in 0.42% Potassium phosphate, 0.87% Sodium chloride, pH 7.3, 30% glycerol, and 0.01% sodium azide.		Storage at -20°C

BACKGROUND

Essential for the degradation of glycogen in lysosomes . Has highest activity on alpha-1,4-linked glycosidic linkages, but can also hydrolyze alpha-1,6-linked glucans .

APPLICATION

To ensure optimal assay performance, AREX recommends conducting reagent titration tailored to each testing system for optimal detection results.

WB	1:500 - 1:2000
IP	1:20 - 1:100

*Results are sample-specific. Please refer to your local assay conditions and test parameters for reference.

PRODUCT OVERVIEW

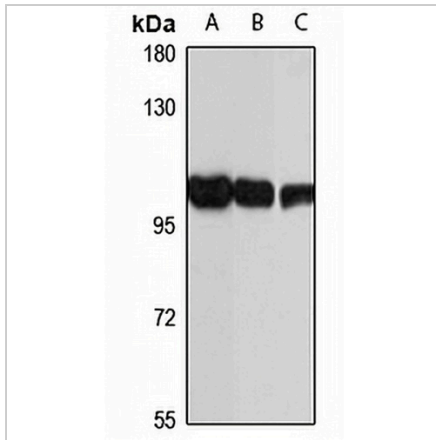
Description	Rabbit polyclonal antibody to GAA
Specificity	Recognizes endogenous levels of GAA protein
Antibody Type	Primary antibody
Immunogen	KLH-conjugated synthetic peptide of human GAA. The exact sequence is proprietary.
Purification	The antibody was purified by immunogen affinity chromatography.
Molecular Weight	Predicted: 105 kD; Observed: 105 kD
Form/Buffer	Liquid in 0.42% Potassium phosphate, 0.87% Sodium chloride, pH 7.3, 30% glycerol, and 0.01% sodium azide.
Alternative Names	Lysosomal alpha-glucosidase; Acid maltase; Aglucosidase alfa
Gene Symbol	GAA
Entrez Gene	2548(Human); 14387(Mouse); 367562(Rat)
SwissProt	P10253(Human); P70699(Mouse); Q6P7A9(Rat)

*AREX continuously optimizes our products. Webpage content may not reflect the latest updates. For inquiries, please contact info@arexbio.com or your local distributor.

*Clone Number, Reactivity, Source/Host and Clonality can be found in the product name and Key Features section above.

DATASHEET**GAA Rabbit Polyclonal Antibody**

CAT. NO. APA15676

DATA

Western blot analysis of GAA expression in A549 (A), mouse heart (B), rat liver (C) whole cell lysates. (Predicted band size: 105 kD; Observed band size: 105 kD)

STORAGE

Store at 4°C short term. For long term storage, store at -20°C, avoiding freeze/thaw cycles.

NOTE

For Research Use Only. Not for diagnostic, therapeutics, prophylactic or in vivo use.