

DATASHEET

GABRB3 Rabbit Polyclonal Antibody

CAT. NO. APA15677

KEY FEATURES

Target	GABRB3	Source / Host	Rabbit
Reactivity	Human, Mouse, Rat	Clonality	Polyclonal
Applications	WB	Conjugation	Unconjugated
Form / Buffer	Liquid in 0.42% Potassium phosphate, 0.87% Sodium chloride, pH 7.3, 30% glycerol, and 0.01% sodium azide.		Storage at -20°C

BACKGROUND

Beta subunit of the heteropentameric ligand-gated chloride channel gated by gamma-aminobutyric acid (GABA), a major inhibitory neurotransmitter in the brain, a major inhibitory neurotransmitter in the brain. GABA-gated chloride channels, also named GABA(A) receptors (GABAAR), consist of five subunits arranged around a central pore and contain GABA active binding site(s) located at the alpha and beta subunit interface(s). GABAARs containing beta-3/GABRB3 subunit are found at both synaptic and extrasynaptic sites. When activated by GABA, GABAARs selectively allow the flow of chloride anions across the cell membrane down their electrochemical gradient.

APPLICATION

To ensure optimal assay performance, AREX recommends conducting reagent titration tailored to each testing system for optimal detection results.

WB	1:500 - 1:2000
----	----------------

*Results are sample-specific. Please refer to your local assay conditions and test parameters for reference.

PRODUCT OVERVIEW

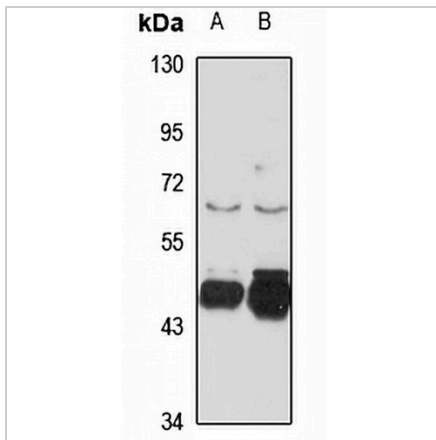
Description	Rabbit polyclonal antibody to GABRB3
Specificity	Recognizes endogenous levels of GABRB3 protein
Antibody Type	Primary antibody
Immunogen	Recombinant fusion protein of human GABRB3. The exact sequence is proprietary.
Purification	The antibody was purified by immunogen affinity chromatography.
Molecular Weight	Predicted: 45; Observed: 46 kD
Form/Buffer	Liquid in 0.42% Potassium phosphate, 0.87% Sodium chloride, pH 7.3, 30% glycerol, and 0.01% sodium azide.
Alternative Names	Gamma-aminobutyric acid receptor subunit beta-3; GABA(A) receptor subunit beta-3
Gene Symbol	GABRB3
Entrez Gene	2562(Human); 14402(Mouse); 24922(Rat)
SwissProt	P28472(Human); P63080(Mouse); P63079(Rat)

*AREX continuously optimizes our products. Webpage content may not reflect the latest updates. For inquiries, please contact info@arexbio.com or your local distributor.

*Clone Number, Reactivity, Source/Host and Clonality can be found in the product name and Key Features section above.

DATASHEET**GABRB3 Rabbit Polyclonal Antibody**

CAT. NO. APA15677

DATA

Western blot analysis of GABRB3 expression in A549 (A), BT474 (B) whole cell lysates. (Predicted band size: 45; 46; 54 kD; Observed band size: 46 kD)

STORAGE

Store at 4°C short term. For long term storage, store at -20°C, avoiding freeze/thaw cycles.

NOTE

For Research Use Only. Not for diagnostic, therapeutics, prophylactic or in vivo use.