

DATASHEET

GABRE Rabbit Polyclonal Antibody

CAT. NO. APA15678

KEY FEATURES

Target	GABRE	Source / Host	Rabbit
Reactivity	Human, Mouse, Rat	Clonality	Polyclonal
Applications	WB	Conjugation	Unconjugated
Form / Buffer	Liquid in 0.42% Potassium phosphate, 0.87% Sodium chloride, pH 7.3, 30% glycerol, and 0.01% sodium azide.		Storage at -20°C

BACKGROUND

Epsilon subunit of the heteropentameric ligand-gated chloride channel gated by gamma-aminobutyric acid (GABA), a major inhibitory neurotransmitter in the brain, a major inhibitory neurotransmitter in the brain. GABA-gated chloride channels, also named GABA(A) receptors (GABAAR), consist of five subunits arranged around a central pore and contain GABA active binding site(s) located at the alpha and beta subunit interfaces. When activated by GABA, GABAARs selectively allow the flow of chloride anions across the cell membrane down their electrochemical gradient. GABAARs containing epsilon subunits also permit spontaneous chloride channel activity while preserving the structural information required for GABA-gated openings.

APPLICATION

To ensure optimal assay performance, AREX recommends conducting reagent titration tailored to each testing system for optimal detection results.

WB	1:500 - 1:2000
----	----------------

*Results are sample-specific. Please refer to your local assay conditions and test parameters for reference.

PRODUCT OVERVIEW

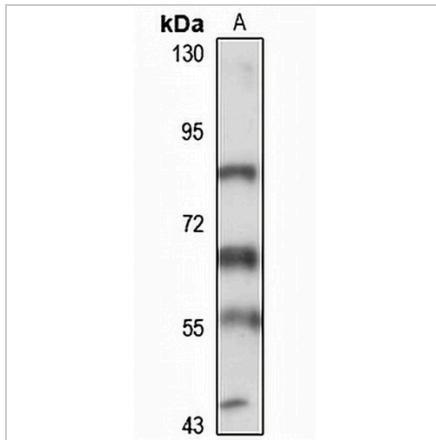
Description	Rabbit polyclonal antibody to GABRE
Specificity	Recognizes endogenous levels of GABRE protein
Antibody Type	Primary antibody
Immunogen	Recombinant fusion protein of human GABRE. The exact sequence is proprietary.
Purification	The antibody was purified by immunogen affinity chromatography.
Molecular Weight	Predicted: 41; Observed: 58 kD
Form/Buffer	Liquid in 0.42% Potassium phosphate, 0.87% Sodium chloride, pH 7.3, 30% glycerol, and 0.01% sodium azide.
Alternative Names	Gamma-aminobutyric acid receptor subunit epsilon; GABA(A) receptor subunit epsilon
Gene Symbol	GABRE
Entrez Gene	2564(Human)
SwissProt	P78334(Human); Q9ES14(Rat)

*AREX continuously optimizes our products. Webpage content may not reflect the latest updates. For inquiries, please contact info@arexbio.com or your local distributor.

*Clone Number, Reactivity, Source/Host and Clonality can be found in the product name and Key Features section above.

DATASHEET**GABRE Rabbit Polyclonal Antibody**

CAT. NO. APA15678

DATA

Western blot analysis of GABRE expression in SHSY5Y (A) whole cell lysates. (Predicted band size: 41; 57 kD; Observed band size: 58 kD)

STORAGE

Store at 4°C short term. For long term storage, store at -20°C, avoiding freeze/thaw cycles.

NOTE

For Research Use Only. Not for diagnostic, therapeutics, prophylactic or in vivo use.