

DATASHEET

GABRR2 Rabbit Polyclonal Antibody

CAT. NO. APA15680

KEY FEATURES

Target	GABRR2	Source / Host	Rabbit
Reactivity	Human, Mouse, Rat	Clonality	Polyclonal
Applications	WB	Conjugation	Unconjugated
Form / Buffer	Liquid in 0.42% Potassium phosphate, 0.87% Sodium chloride, pH 7.3, 30% glycerol, and 0.01% sodium azide.		Storage at -20°C

BACKGROUND

Rho subunit of the pentameric ligand-gated chloride channels responsible for mediating the effects of gamma-aminobutyric acid (GABA), the major inhibitory neurotransmitter in the brain. Rho-containing GABA-gated chloride channels are a subclass of GABA(A) receptors (GABAARs) entirely composed of rho subunits, where GABA molecules bind at the rho intersubunit interfaces. When activated by GABA, rho-GABAARs selectively allow the flow of chloride anions across the cell membrane down their electrochemical gradient. Rho-2 GABAARs may contribute to the regulation of glial development in the cerebellum by controlling extrasynaptic transmission. Rho-2 GABAARs are also involved in neuronal tonic (extrasynaptic) and phasic (synaptic) transmission in the Purkinje neurons of the cerebellum.

APPLICATION

To ensure optimal assay performance, AREX recommends conducting reagent titration tailored to each testing system for optimal detection results.

WB	1:500 - 1:2000
----	----------------

*Results are sample-specific. Please refer to your local assay conditions and test parameters for reference.

PRODUCT OVERVIEW

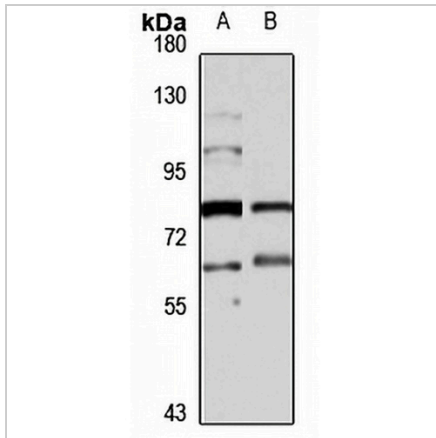
Description	Rabbit polyclonal antibody to GABRR2
Specificity	Recognizes endogenous levels of GABRR2 protein
Antibody Type	Primary antibody
Immunogen	Recombinant fusion protein of human GABRR2. The exact sequence is proprietary.
Purification	The antibody was purified by immunogen affinity chromatography.
Molecular Weight	Predicted: 54; Observed: 65 kD
Form/Buffer	Liquid in 0.42% Potassium phosphate, 0.87% Sodium chloride, pH 7.3, 30% glycerol, and 0.01% sodium azide.
Alternative Names	Gamma-aminobutyric acid receptor subunit rho-2; GABA(A) receptor subunit rho-2; GABA(C) receptor
Gene Symbol	GABRR2
Entrez Gene	2570(Human); 14409(Mouse); 29695(Rat)
SwissProt	P28476(Human); P56476(Mouse); P47742(Rat)

*AREX continuously optimizes our products. Webpage content may not reflect the latest updates. For inquiries, please contact info@arexbio.com or your local distributor.

*Clone Number, Reactivity, Source/Host and Clonality can be found in the product name and Key Features section above.

DATASHEET**GABRR2 Rabbit Polyclonal Antibody**

CAT. NO. APA15680

DATA

Western blot analysis of GABRR2 expression in HL60 (A), mouse heart (B) whole cell lysates. (Predicted band size: 54; 56 kD; Observed band size: 65 kD)

STORAGE

Store at 4°C short term. For long term storage, store at -20°C, avoiding freeze/thaw cycles.

NOTE

For Research Use Only. Not for diagnostic, therapeutics, prophylactic or in vivo use.