

**DATASHEET**

**GADD45 gamma Rabbit Polyclonal Antibody**

CAT. NO. APA15681

**KEY FEATURES**

Target	GADD45 gamma	Source / Host	Rabbit
Reactivity	Human, Mouse, Rat	Clonality	Polyclonal
Applications	WB	Conjugation	Unconjugated
Form / Buffer	Liquid in 0.42% Potassium phosphate, 0.87% Sodium chloride, pH 7.3, 30% glycerol, and 0.01% sodium azide.		Storage at -20°C

**BACKGROUND**

Involved in the regulation of growth and apoptosis. Mediates activation of stress-responsive MTK1/MEKK4 MAPKKK.

**APPLICATION**

To ensure optimal assay performance, AREX recommends conducting reagent titration tailored to each testing system for optimal detection results.

WB	1:500 - 1:2000
----	----------------

\*Results are sample-specific. Please refer to your local assay conditions and test parameters for reference.

**PRODUCT OVERVIEW**

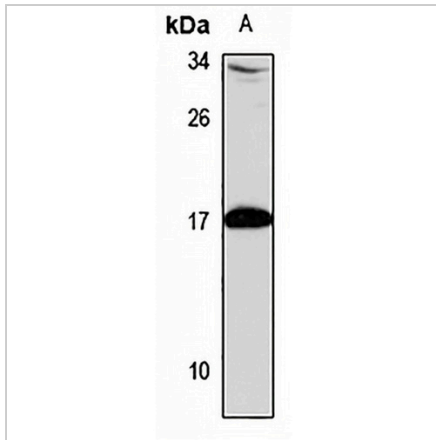
Description	Rabbit polyclonal antibody to GADD45 gamma
Specificity	Recognizes endogenous levels of GADD45 gamma protein
Antibody Type	Primary antibody
Immunogen	Recombinant fusion protein of human GADD45 gamma. The exact sequence is proprietary.
Purification	The antibody was purified by immunogen affinity chromatography.
Molecular Weight	Predicted: 17 kD; Observed: 17 kD
Form/Buffer	Liquid in 0.42% Potassium phosphate, 0.87% Sodium chloride, pH 7.3, 30% glycerol, and 0.01% sodium azide.
Alternative Names	CR6; DDIT2; Growth arrest and DNA damage-inducible protein GADD45 gamma; Cytokine-responsive protein CR6; DNA damage-inducible transcript 2 protein; DDIT-2
Gene Symbol	GADD45G
Entrez Gene	10912(Human)
SwissProt	O95257(Human)

\*AREX continuously optimizes our products. Webpage content may not reflect the latest updates. For inquiries, please contact [info@arexbio.com](mailto:info@arexbio.com) or your local distributor.

\*Clone Number, Reactivity, Source/Host and Clonality can be found in the product name and Key Features section above.

**DATASHEET****GADD45 gamma Rabbit Polyclonal Antibody**

CAT. NO. APA15681

**DATA**

Western blot analysis of GADD45 gamma expression in RAW264.7 (A) whole cell lysates.  
(Predicted band size: 17 kD; Observed band size: 17 kD)

**STORAGE**

Store at 4°C short term. For long term storage, store at -20°C, avoiding freeze/thaw cycles.

**NOTE**

For Research Use Only. Not for diagnostic, therapeutics, prophylactic or in vivo use.