

## DATASHEET

# GALM Rabbit Polyclonal Antibody

CAT. NO. APA15682

### KEY FEATURES

Target	GALM	Source / Host	Rabbit
Reactivity	Human, Mouse, Rat	Clonality	Polyclonal
Applications	WB	Conjugation	Unconjugated
Form / Buffer	Liquid in 0.42% Potassium phosphate, 0.87% Sodium chloride, pH 7.3, 30% glycerol, and 0.01% sodium azide.		Storage at-20°C

### BACKGROUND

Mutarotase that catalyzes the interconversion of beta-D-galactose and alpha-D-galactose during galactose metabolism . Beta-D-galactose is metabolized in the liver into glucose 1-phosphate, the primary metabolic fuel, by the action of four enzymes that constitute the Leloir pathway: GALM, GALK1 (galactokinase), GALT (galactose-1-phosphate uridylyltransferase) and GALE (UDP-galactose-4'-epimerase) . Involved in the maintenance of the equilibrium between the beta- and alpha-anomers of galactose, therefore ensuring a sufficient supply of the alpha-anomer for GALK1 . Also active on D-glucose although shows a preference for galactose over glucose .

### APPLICATION

To ensure optimal assay performance, AREX recommends conducting reagent titration tailored to each testing system for optimal detection results.

WB	1:500 - 1:2000
----	----------------

\*Results are sample-specific. Please refer to your local assay conditions and test parameters for reference.

### PRODUCT OVERVIEW

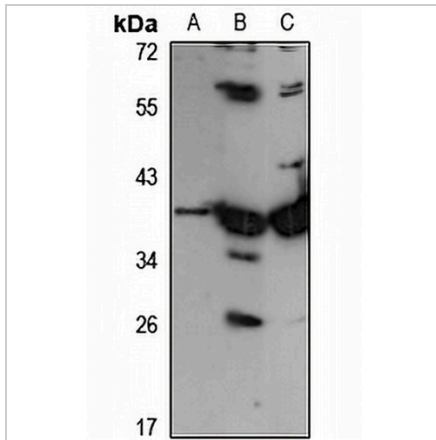
Description	Rabbit polyclonal antibody to GALM
Specificity	Recognizes endogenous levels of GALM protein
Antibody Type	Primary antibody
Immunogen	Recombinant fusion protein of human GALM. The exact sequence is proprietary.
Purification	The antibody was purified by immunogen affinity chromatography.
Molecular Weight	Predicted: 37 kD; Observed: 38 kD
Form/Buffer	Liquid in 0.42% Potassium phosphate, 0.87% Sodium chloride, pH 7.3, 30% glycerol, and 0.01% sodium azide.
Alternative Names	Aldose 1-epimerase; Galactose mutarotase
Gene Symbol	GALM
Entrez Gene	130589(Human); 319625(Mouse); 313843(Rat)
SwissProt	Q96C23(Human); Q8K157(Mouse); Q66HG4(Rat)

\*AREX continuously optimizes our products. Webpage content may not reflect the latest updates. For inquiries, please contact [info@arexbio.com](mailto:info@arexbio.com) or your local distributor.

\*Clone Number, Reactivity, Source/Host and Clonality can be found in the product name and Key Features section above.

**DATASHEET****GALM Rabbit Polyclonal Antibody**

CAT. NO. APA15682

**DATA**

Western blot analysis of GALM expression in HepG2 (A), mouse kidney (B), rat liver (C) whole cell lysates. (Predicted band size: 37 kD; Observed band size: 38 kD)

**STORAGE**

Store at 4°C short term. For long term storage, store at -20°C, avoiding freeze/thaw cycles.

**NOTE**

For Research Use Only. Not for diagnostic, therapeutics, prophylactic or in vivo use.