

DATASHEET

Gigaxonin Rabbit Polyclonal Antibody

CAT. NO. APA15685

KEY FEATURES

Target	Gigaxonin	Source / Host	Rabbit
Reactivity	Human, Mouse	Clonality	Polyclonal
Applications	WB	Conjugation	Unconjugated
Form / Buffer	Liquid in 0.42% Potassium phosphate, 0.87% Sodium chloride, pH 7.3, 30% glycerol, and 0.01% sodium azide.		Storage at -20°C

BACKGROUND

Probable cytoskeletal component that directly or indirectly plays an important role in neurofilament architecture. May act as a substrate-specific adapter of an E3 ubiquitin-protein ligase complex which mediates the ubiquitination and subsequent proteasomal degradation of target proteins. Controls degradation of TBCB. Controls degradation of MAP1B and MAP1S, and is critical for neuronal maintenance and survival.

APPLICATION

To ensure optimal assay performance, AREX recommends conducting reagent titration tailored to each testing system for optimal detection results.

WB	1:500 - 1:2000
----	----------------

*Results are sample-specific. Please refer to your local assay conditions and test parameters for reference.

PRODUCT OVERVIEW

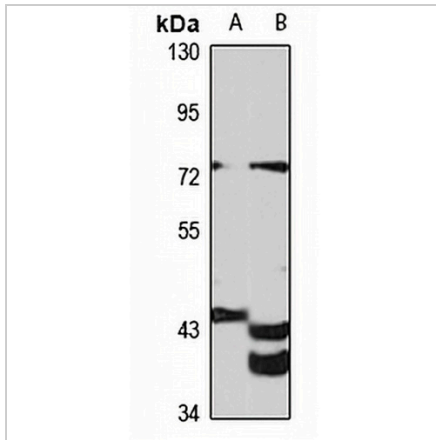
Description	Rabbit polyclonal antibody to Gigaxonin
Specificity	Recognizes endogenous levels of Gigaxonin protein
Antibody Type	Primary antibody
Immunogen	Recombinant fusion protein of human Gigaxonin. The exact sequence is proprietary.
Purification	The antibody was purified by immunogen affinity chromatography.
Molecular Weight	Predicted: 67 kD; Observed: 71 kD
Form/Buffer	Liquid in 0.42% Potassium phosphate, 0.87% Sodium chloride, pH 7.3, 30% glycerol, and 0.01% sodium azide.
Alternative Names	GAN1; KLHL16; Gigaxonin; Kelch-like protein 16
Gene Symbol	GAN
Entrez Gene	8139(Human); 209239(Mouse)
SwissProt	Q9H2C0(Human); Q8CA72(Mouse)

*AREX continuously optimizes our products. Webpage content may not reflect the latest updates. For inquiries, please contact info@arexbio.com or your local distributor.

*Clone Number, Reactivity, Source/Host and Clonality can be found in the product name and Key Features section above.

DATASHEET**Gigaxonin Rabbit Polyclonal Antibody**

CAT. NO. APA15685

DATA

Western blot analysis of Gigaxonin expression in SW480 (A), mouse skeletal muscle (B) whole cell lysates. (Predicted band size: 67 kD; Observed band size: 71 kD)

STORAGE

Store at 4°C short term. For long term storage, store at -20°C, avoiding freeze/thaw cycles.

NOTE

For Research Use Only. Not for diagnostic, therapeutics, prophylactic or in vivo use.