

DATASHEET

GAR22 Rabbit Polyclonal Antibody

CAT. NO. APA15687

KEY FEATURES

Target	GAR22	Source / Host	Rabbit
Reactivity	Human	Clonality	Polyclonal
Applications	WB	Conjugation	Unconjugated
Form / Buffer	Liquid in 0.42% Potassium phosphate, 0.87% Sodium chloride, pH 7.3, 30% glycerol, and 0.01% sodium azide.		Storage at -20°C

BACKGROUND

Involved in the cross-linking of microtubules and microfilaments . Regulates microtubule dynamics and stability by interacting with microtubule plus-end tracking proteins, such as MAPRE1, to regulate microtubule growth along actin stress fibers .

APPLICATION

To ensure optimal assay performance, AREX recommends conducting reagent titration tailored to each testing system for optimal detection results.

WB	1:500 - 1:2000
----	----------------

*Results are sample-specific. Please refer to your local assay conditions and test parameters for reference.

PRODUCT OVERVIEW

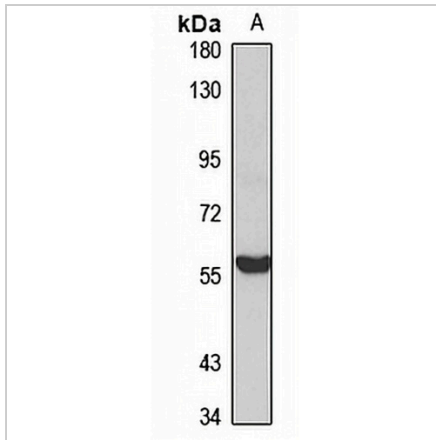
Description	Rabbit polyclonal antibody to GAR22
Specificity	Recognizes endogenous levels of GAR22 protein
Antibody Type	Primary antibody
Immunogen	Recombinant fusion protein of human GAR22. The exact sequence is proprietary.
Purification	The antibody was purified by immunogen affinity chromatography.
Molecular Weight	Predicted: 34; Observed: 58 kD
Form/Buffer	Liquid in 0.42% Potassium phosphate, 0.87% Sodium chloride, pH 7.3, 30% glycerol, and 0.01% sodium azide.
Alternative Names	GAR22; GAS2-like protein 1; GAS2-related protein on chromosome 22; Growth arrest-specific protein 2-like 1
Gene Symbol	GAS2L1
Entrez Gene	10634(Human)
SwissProt	Q99501(Human)

*AREX continuously optimizes our products. Webpage content may not reflect the latest updates. For inquiries, please contact info@arexbio.com or your local distributor.

*Clone Number, Reactivity, Source/Host and Clonality can be found in the product name and Key Features section above.

DATASHEET**GAR22 Rabbit Polyclonal Antibody**

CAT. NO. APA15687

DATA

Western blot analysis of GAR22 expression in 22Rv1 (A) whole cell lysates. (Predicted band size: 34; 36; 48; 72 kD; Observed band size: 58 kD)

STORAGE

Store at 4°C short term. For long term storage, store at -20°C, avoiding freeze/thaw cycles.

NOTE

For Research Use Only. Not for diagnostic, therapeutics, prophylactic or in vivo use.