

DATASHEET

GAS7 Rabbit Polyclonal Antibody

CAT. NO. APA15688

KEY FEATURES

Target	GAS7	Source / Host	Rabbit
Reactivity	Human, Mouse, Rat	Clonality	Polyclonal
Applications	WB, IF/ICC	Conjugation	Unconjugated
Form / Buffer	Liquid in 0.42% Potassium phosphate, 0.87% Sodium chloride, pH 7.3, 30% glycerol, and 0.01% sodium azide.		Storage at -20°C

BACKGROUND

May play a role in promoting maturation and morphological differentiation of cerebellar neurons.

APPLICATION

To ensure optimal assay performance, AREX recommends conducting reagent titration tailored to each testing system for optimal detection results.

WB	1:500 - 1:2000
IF/ICC	1:50 - 1:200

*Results are sample-specific. Please refer to your local assay conditions and test parameters for reference.

PRODUCT OVERVIEW

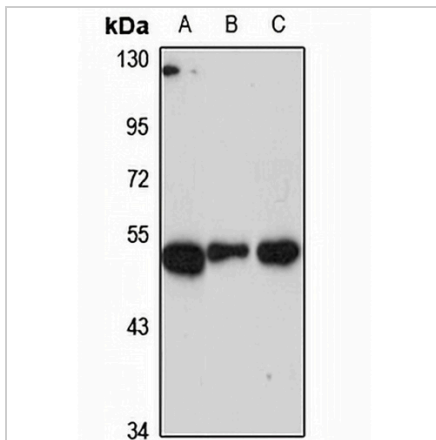
Description	Rabbit polyclonal antibody to GAS7
Specificity	Recognizes endogenous levels of GAS7 protein
Antibody Type	Primary antibody
Immunogen	Recombinant fusion protein of human GAS7. The exact sequence is proprietary.
Purification	The antibody was purified by immunogen affinity chromatography.
Molecular Weight	Predicted: 39; Observed: 54 kD
Form/Buffer	Liquid in 0.42% Potassium phosphate, 0.87% Sodium chloride, pH 7.3, 30% glycerol, and 0.01% sodium azide.
Alternative Names	KIAA0394; Growth arrest-specific protein 7; GAS-7
Gene Symbol	GAS7
Entrez Gene	8522(Human)
SwissProt	O60861(Human); Q60780(Mouse); O55148(Rat)

*AREX continuously optimizes our products. Webpage content may not reflect the latest updates. For inquiries, please contact info@arexbio.com or your local distributor.

*Clone Number, Reactivity, Source/Host and Clonality can be found in the product name and Key Features section above.

DATASHEET**GAS7 Rabbit Polyclonal Antibody**

CAT. NO. APA15688

DATA

Western blot analysis of GAS7 expression in A375 (A), mouse brain (B), rat brain (C) whole cell lysates. (Predicted band size: 39; 47; 54 kD; Observed band size: 54 kD)

STORAGE

Store at 4°C short term. For long term storage, store at -20°C, avoiding freeze/thaw cycles.

NOTE

For Research Use Only. Not for diagnostic, therapeutics, prophylactic or in vivo use.