

## DATASHEET

# GATA6 Rabbit Polyclonal Antibody

CAT. NO. APA15689

### KEY FEATURES

Target	GATA6	Source / Host	Rabbit
Reactivity	Human, Mouse	Clonality	Polyclonal
Applications	WB	Conjugation	Unconjugated
Form / Buffer	Liquid in 0.42% Potassium phosphate, 0.87% Sodium chloride, pH 7.3, 30% glycerol, and 0.01% sodium azide.		Storage at -20°C

### BACKGROUND

Transcriptional activator . Regulates SEMA3C and PLXNA2 . Involved in gene regulation specifically in the gastric epithelium . May regulate genes that protect epithelial cells from bacterial infection . Involved in bone morphogenetic protein (BMP)-mediated cardiac-specific gene expression . Binds to BMP response element (BMPRE) DNA sequences within cardiac activating regions . In human skin, controls several physiological processes contributing to homeostasis of the upper pilosebaceous unit. Triggers ductal and sebaceous differentiation as well as limits cell proliferation and lipid production to prevent hyperseborrhoea. Mediates the effects of retinoic acid on sebocyte proliferation, differentiation and lipid production.

### APPLICATION

To ensure optimal assay performance, AREX recommends conducting reagent titration tailored to each testing system for optimal detection results.

WB	1:500 - 1:2000
----	----------------

\*Results are sample-specific. Please refer to your local assay conditions and test parameters for reference.

### PRODUCT OVERVIEW

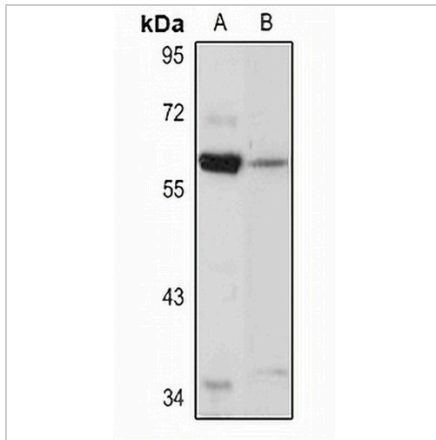
Description	Rabbit polyclonal antibody to GATA6
Specificity	Recognizes endogenous levels of GATA6 protein
Antibody Type	Primary antibody
Immunogen	KLH-conjugated synthetic peptide of human GATA6. The exact sequence is proprietary.
Purification	The antibody was purified by immunogen affinity chromatography.
Molecular Weight	Predicted: 45; Observed: 60 kD
Form/Buffer	Liquid in 0.42% Potassium phosphate, 0.87% Sodium chloride, pH 7.3, 30% glycerol, and 0.01% sodium azide.
Alternative Names	Transcription factor GATA-6; GATA-binding factor 6
Gene Symbol	GATA6
Entrez Gene	2627(Human); 14465(Mouse)
SwissProt	Q92908(Human); Q61169(Mouse)

\*AREX continuously optimizes our products. Webpage content may not reflect the latest updates. For inquiries, please contact [info@arexbio.com](mailto:info@arexbio.com) or your local distributor.

\*Clone Number, Reactivity, Source/Host and Clonality can be found in the product name and Key Features section above.

**DATASHEET****GATA6 Rabbit Polyclonal Antibody**

CAT. NO. APA15689

**DATA**

Western blot analysis of GATA6 expression in HEK293T (A), mouse lung (B) whole cell lysates. (Predicted band size: 45; 60 kD; Observed band size: 60 kD)

**STORAGE**

Store at 4°C short term. For long term storage, store at -20°C, avoiding freeze/thaw cycles.

**NOTE**

For Research Use Only. Not for diagnostic, therapeutics, prophylactic or in vivo use.