

DATASHEET

GDF5 Rabbit Polyclonal Antibody

CAT. NO. APA15699

KEY FEATURES

Target	GDF5	Source / Host	Rabbit
Reactivity	Human, Mouse, Rat	Clonality	Polyclonal
Applications	WB	Conjugation	Unconjugated
Form / Buffer	Liquid in 0.42% Potassium phosphate, 0.87% Sodium chloride, pH 7.3, 30% glycerol, and 0.01% sodium azide.		Storage at -20°C

BACKGROUND

Growth factor involved in bone and cartilage formation. During cartilage development regulates differentiation of chondrogenic tissue through two pathways. Firstly, positively regulates differentiation of chondrogenic tissue through its binding of high affinity with BMPR1B and of less affinity with BMPR1A, leading to induction of SMAD1-SMAD5-SMAD8 complex phosphorylation and then SMAD protein signaling transduction . Secondly, negatively regulates chondrogenic differentiation through its interaction with NOG . Required to prevent excessive muscle loss upon denervation. This function requires SMAD4 and is mediated by phosphorylated SMAD1/5/8 . Binds bacterial lipopolysaccharide (LPS) and mediates LPS-induced inflammatory response, including TNF secretion by monocytes .

APPLICATION

To ensure optimal assay performance, AREX recommends conducting reagent titration tailored to each testing system for optimal detection results.

WB	1:500 - 1:2000
----	----------------

*Results are sample-specific. Please refer to your local assay conditions and test parameters for reference.

PRODUCT OVERVIEW

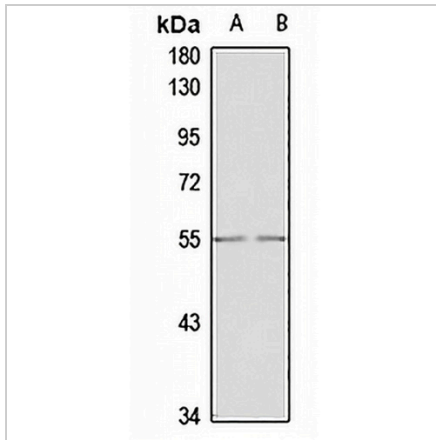
Description	Rabbit polyclonal antibody to GDF5
Specificity	Recognizes endogenous levels of GDF5 protein
Antibody Type	Primary antibody
Immunogen	Recombinant fusion protein of human GDF5. The exact sequence is proprietary.
Purification	The antibody was purified by immunogen affinity chromatography.
Molecular Weight	Predicted: 55 kD; Observed: 55 kD
Form/Buffer	Liquid in 0.42% Potassium phosphate, 0.87% Sodium chloride, pH 7.3, 30% glycerol, and 0.01% sodium azide.
Alternative Names	BMP14; CDMP1; Growth/differentiation factor 5; GDF-5; Bone morphogenetic protein 14; BMP-14; Cartilage-derived morphogenetic protein 1; CDMP-1; Lipopolysaccharide-associated protein 4; LAP-4; LPS-associated protein 4; Radotermin
Gene Symbol	GDF5
Entrez Gene	8200(Human); 14563(Mouse)
SwissProt	P43026(Human); P43027(Mouse)

*AREX continuously optimizes our products. Webpage content may not reflect the latest updates. For inquiries, please contact info@arexbio.com or your local distributor.

*Clone Number, Reactivity, Source/Host and Clonality can be found in the product name and Key Features section above.

DATASHEET**GDF5 Rabbit Polyclonal Antibody**

CAT. NO. APA15699

DATA

Western blot analysis of GDF5 expression in U87MG (A), Raji (B) whole cell lysates. (Predicted band size: 55 kD; Observed band size: 55 kD)

STORAGE

Store at 4°C short term. For long term storage, store at -20°C, avoiding freeze/thaw cycles.

NOTE

For Research Use Only. Not for diagnostic, therapeutics, prophylactic or in vivo use.