

DATASHEET

GFAT2 Rabbit Polyclonal Antibody

CAT. NO. APA15703

KEY FEATURES

Target	GFAT2	Source / Host	Rabbit
Reactivity	Human, Mouse, Rat	Clonality	Polyclonal
Applications	WB, IF/ICC	Conjugation	Unconjugated
Form / Buffer	Liquid in 0.42% Potassium phosphate, 0.87% Sodium chloride, pH 7.3, 30% glycerol, and 0.01% sodium azide.		Storage at -20°C

BACKGROUND

Rate-limiting enzyme of the hexosamine biosynthetic pathway (HBP) that catalyzes the formation of glucosamine-6-phosphate from fructose-6-phosphate and glutamine, thereby controlling the flux of glucose into this pathway that catalyzes the formation of glucosamine-6-phosphate from fructose-6-phosphate and glutamine, thereby controlling the flux of glucose into this pathway . Via control of the HPB, likely regulates the availability of precursors for N- and O-linked protein glycosylation . Exhibits feedback inhibition by UDP-N-acetylglucosamine (UDP-GlcNAc), although to a lesser extent than GFPT1 .

APPLICATION

To ensure optimal assay performance, AREX recommends conducting reagent titration tailored to each testing system for optimal detection results.

WB	1:500 - 1:2000
IF/ICC	1:50 - 1:200

*Results are sample-specific. Please refer to your local assay conditions and test parameters for reference.

PRODUCT OVERVIEW

Description	Rabbit polyclonal antibody to GFAT2
Specificity	Recognizes endogenous levels of GFAT2 protein
Antibody Type	Primary antibody
Immunogen	Recombinant fusion protein of human GFAT2. The exact sequence is proprietary.
Purification	The antibody was purified by immunogen affinity chromatography.
Molecular Weight	Predicted: 76 kD; Observed: 77 kD
Form/Buffer	Liquid in 0.42% Potassium phosphate, 0.87% Sodium chloride, pH 7.3, 30% glycerol, and 0.01% sodium azide.
Alternative Names	Glutamine--fructose-6-phosphate aminotransferase [isomerizing] 2; D-fructose-6-phosphate amidotransferase 2; Glutamine:fructose-6-phosphate amidotransferase 2; GFAT 2; GFAT2; Hexosephosphate aminotransferase 2
Gene Symbol	GFPT2
Entrez Gene	9945(Human); 14584(Mouse); 360518(Rat)
SwissProt	O94808(Human); Q9Z2Z9(Mouse); Q4KMC4(Rat)

*AREX continuously optimizes our products. Webpage content may not reflect the latest updates. For inquiries, please contact info@arexbio.com or your local distributor.

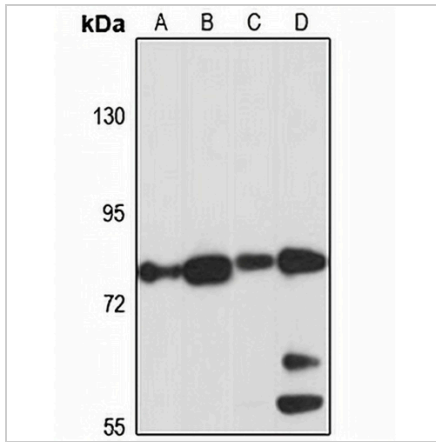
*Clone Number, Reactivity, Source/Host and Clonality can be found in the product name and Key Features section above.

DATASHEET

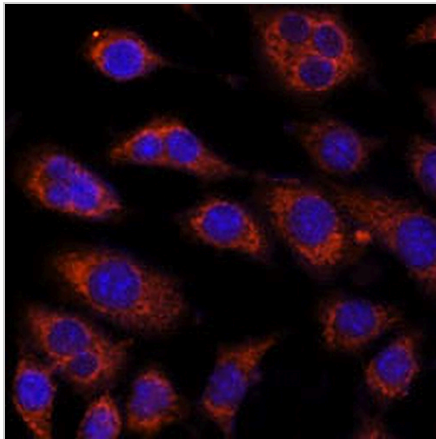
GFAT2 Rabbit Polyclonal Antibody

CAT. NO. APA15703

DATA



Western blot analysis of GFAT2 expression in A375 (A), NIH3T3 (B), mouse testis (C), rat heart (D) whole cell lysates. (Predicted band size: 76 kD; Observed band size: 77 kD)



Immunofluorescent analysis of GFAT2 staining in L929 cells. Formalin-fixed cells were permeabilized with 0.1% Triton X-100 in TBS for 5-10 minutes and blocked with 3% BSA-PBS for 30 minutes at room temperature. Cells were probed with the primary antibody in 3% BSA-PBS and incubated overnight at 4 °C in a humidified chamber. Cells were washed with PBST and incubated with a AREX® Fluor 594-conjugated secondary antibody (red) in PBS at room temperature in the dark. DAPI was used to stain the cell nuclei (blue).

STORAGE

Store at 4°C short term. For long term storage, store at -20°C, avoiding freeze/thaw cycles.

NOTE

For Research Use Only. Not for diagnostic, therapeutics, prophylactic or in vivo use.