

**DATASHEET**

**GGCT Rabbit Polyclonal Antibody**

CAT. NO. APA15704

**KEY FEATURES**

|               |   |               |                    |
|---------------|---|---------------|--------------------|
| Target        | GGCT  | Source / Host | Rabbit             |
| Reactivity    | Human   | Clonality     | Polyclonal         |
| Applications  | WB  | Conjugation   | Unconjugated       |
| Form / Buffer | Liquid in 0.42% Potassium phosphate, 0.87% Sodium chloride, pH 7.3, 30% glycerol, and 0.01% sodium azide. |               | Storage<br>at-20°C |

**BACKGROUND**

Catalyzes the formation of 5-oxoproline from gamma-glutamyl dipeptides and may play a significant role in glutathione homeostasis . Induces release of cytochrome c from mitochondria with resultant induction of apoptosis .

**APPLICATION**

To ensure optimal assay performance, AREX recommends conducting reagent titration tailored to each testing system for optimal detection results.

|    |                |
|----|----------------|
| WB | 1:500 - 1:2000 |
|----|----------------|

\*Results are sample-specific. Please refer to your local assay conditions and test parameters for reference.

**PRODUCT OVERVIEW**

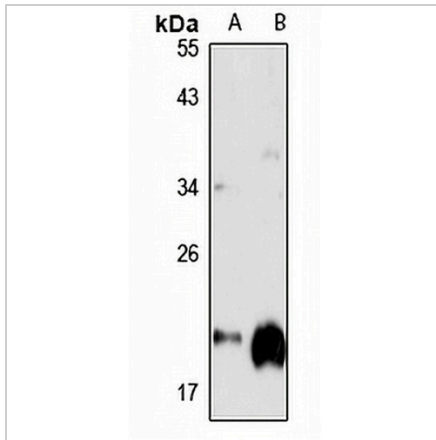
|                   |   |
|-------------------|---|
| Description       | Rabbit polyclonal antibody to GGCT  |
| Specificity       | Recognizes endogenous levels of GGCT protein  |
| Antibody Type     | Primary antibody  |
| Immunogen         | Recombinant fusion protein of human GGCT. The exact sequence is proprietary.                              |
| Purification      | The antibody was purified by immunogen affinity chromatography.   |
| Molecular Weight  | Predicted: 10; Observed: 21 kD  |
| Form/Buffer       | Liquid in 0.42% Potassium phosphate, 0.87% Sodium chloride, pH 7.3, 30% glycerol, and 0.01% sodium azide. |
| Alternative Names | C7orf24; CRF21; Gamma-glutamylcyclotransferase; Cytochrome c-releasing factor 21                          |
| Gene Symbol       | GGCT  |
| Entrez Gene       | 79017(Human)  |
| SwissProt         | O75223(Human)   |

\*AREX continuously optimizes our products. Webpage content may not reflect the latest updates. For inquiries, please contact [info@arexbio.com](mailto:info@arexbio.com) or your local distributor.

\*Clone Number, Reactivity, Source/Host and Clonality can be found in the product name and Key Features section above.

**DATASHEET****GGCT Rabbit Polyclonal Antibody**

CAT. NO. APA15704

**DATA**

Western blot analysis of GGCT expression in A549 (A), A431 (B) whole cell lysates.  
(Predicted band size: 10; 12; 19; 21 kD; Observed band size: 21 kD)

**STORAGE**

Store at 4°C short term. For long term storage, store at -20°C, avoiding freeze/thaw cycles.

**NOTE**

For Research Use Only. Not for diagnostic, therapeutics, prophylactic or in vivo use.