

DATASHEET

GHR Rabbit Polyclonal Antibody

CAT. NO. APA15706

KEY FEATURES

Target	GHR	Source / Host	Rabbit
Reactivity	Human, Mouse, Rat	Clonality	Polyclonal
Applications	WB, IF/ICC	Conjugation	Unconjugated
Form / Buffer	Liquid in 0.42% Potassium phosphate, 0.87% Sodium chloride, pH 7.3, 30% glycerol, and 0.01% sodium azide.		Storage at -20°C

BACKGROUND

Receptor for pituitary gland growth hormone (GH1) involved in regulating postnatal body growth involved in regulating postnatal body growth . On ligand binding, couples to the JAK2/STAT5 pathway .

APPLICATION

To ensure optimal assay performance, AREX recommends conducting reagent titration tailored to each testing system for optimal detection results.

WB	1:500 - 1:2000
IF/ICC	1:50 - 1:200

*Results are sample-specific. Please refer to your local assay conditions and test parameters for reference.

PRODUCT OVERVIEW

Description	Rabbit polyclonal antibody to GHR
Specificity	Recognizes endogenous levels of GHR protein
Antibody Type	Primary antibody
Immunogen	Recombinant fusion protein of human GHR. The exact sequence is proprietary.
Purification	The antibody was purified by immunogen affinity chromatography.
Molecular Weight	Predicted: 33; Observed: 130 kD
Form/Buffer	Liquid in 0.42% Potassium phosphate, 0.87% Sodium chloride, pH 7.3, 30% glycerol, and 0.01% sodium azide.
Alternative Names	Growth hormone receptor; GH receptor; Somatotropin receptor
Gene Symbol	GHR
Entrez Gene	2690(Human); 14600(Mouse); 25235(Rat)
SwissProt	P10912(Human); P16882(Mouse); P16310(Rat)

*AREX continuously optimizes our products. Webpage content may not reflect the latest updates. For inquiries, please contact info@arexbio.com or your local distributor.

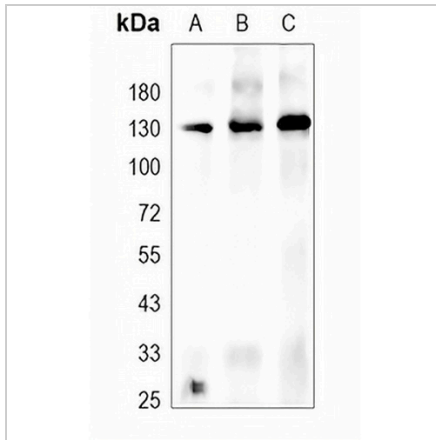
*Clone Number, Reactivity, Source/Host and Clonality can be found in the product name and Key Features section above.

DATASHEET

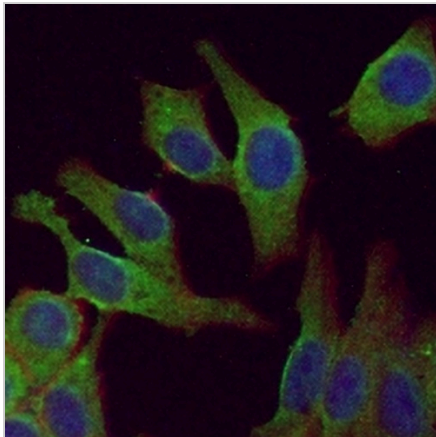
GHR Rabbit Polyclonal Antibody

CAT. NO. APA15706

DATA



Western blot analysis of GHR expression in MCF7 (A), mouse brain (B), rat brain (C) whole cell lysates. (Predicted band size: 33; 34; 69; 71 kD; Observed band size: 130 kD)



Immunofluorescent analysis of GHR staining in HepG2 cells. Formalin-fixed cells were permeabilized with 0.1% Triton X-100 in TBS for 5-10 minutes and blocked with 3% BSA-PBS for 30 minutes at room temperature. Cells were probed with the primary antibody in 3% BSA-PBS and incubated overnight at 4 °C in a humidified chamber. Cells were washed with PBST and incubated with an AREX® Fluor 488 -conjugated secondary antibody (green) in PBS at room temperature in the dark. Phalloidin - AREX® Fluor 594 was used to stain Actin filaments (red). DAPI was used to stain the cell nuclei (blue).

STORAGE

Store at 4°C short term. For long term storage, store at -20°C, avoiding freeze/thaw cycles.

NOTE

For Research Use Only. Not for diagnostic, therapeutics, prophylactic or in vivo use.