

DATASHEET

GIMAP5 Rabbit Polyclonal Antibody

CAT. NO. APA15707

KEY FEATURES

Target	GIMAP5	Source / Host	Rabbit
Reactivity	Human, Mouse, Rat	Clonality	Polyclonal
Applications	WB	Conjugation	Unconjugated
Form / Buffer	Liquid in 0.42% Potassium phosphate, 0.87% Sodium chloride, pH 7.3, 30% glycerol, and 0.01% sodium azide.		Storage at -20°C

BACKGROUND

Plays a role in T lymphocyte development and the optimal generation of CD4/CD8 double-positive thymocytes . Inhibitor of GSK3A, possibly by sequestering GSK3A in cytoplasmic vesicles and impairing its translocation to the nucleus. Consequently, impairs GSK3A-dependent transcriptional program and regulation of the DNA damage response occurring during T cells proliferation . Required for the survival of peripheral T cells, natural killer (NK) and NK T-cell development and the maintenance of normal liver function . May promote the survival of mature T lymphocytes upon cytokine withdrawal . May regulate Ca(2+) homeostasis by modulating lysosomal Ca(2+) stores, preventing its accumulation in the absence of T cell activation .

APPLICATION

To ensure optimal assay performance, AREX recommends conducting reagent titration tailored to each testing system for optimal detection results.

WB	1:500 - 1:2000
----	----------------

*Results are sample-specific. Please refer to your local assay conditions and test parameters for reference.

PRODUCT OVERVIEW

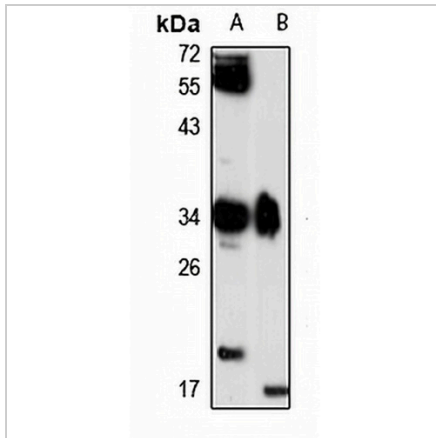
Description	Rabbit polyclonal antibody to GIMAP5
Specificity	Recognizes endogenous levels of GIMAP5 protein
Antibody Type	Primary antibody
Immunogen	Recombinant fusion protein of human GIMAP5. The exact sequence is proprietary.
Purification	The antibody was purified by immunogen affinity chromatography.
Molecular Weight	Predicted: 34; Observed: 34 kD
Form/Buffer	Liquid in 0.42% Potassium phosphate, 0.87% Sodium chloride, pH 7.3, 30% glycerol, and 0.01% sodium azide.
Alternative Names	IAN4L1; IAN5; IMAP3; GTPase IMAP family member 5; Immunity-associated nucleotide 4-like 1 protein; Immunity-associated nucleotide 5 protein; IAN-5; hIAN5; Immunity-associated protein 3
Gene Symbol	GIMAP5
Entrez Gene	55340(Human); 317757(Mouse); 246774(Rat)
SwissProt	Q96F15(Human); Q8BWF2(Mouse); Q8K3L6(Rat)

*AREX continuously optimizes our products. Webpage content may not reflect the latest updates. For inquiries, please contact info@arexbio.com or your local distributor.

*Clone Number, Reactivity, Source/Host and Clonality can be found in the product name and Key Features section above.

DATASHEET**GIMAP5 Rabbit Polyclonal Antibody**

CAT. NO. APA15707

DATA

Western blot analysis of GIMAP5 expression in mouse kidney (A), rat spleen (B) whole cell lysates. (Predicted band size: 34; 39 kD; Observed band size: 34 kD)

STORAGE

Store at 4°C short term. For long term storage, store at -20°C, avoiding freeze/thaw cycles.

NOTE

For Research Use Only. Not for diagnostic, therapeutics, prophylactic or in vivo use.