

DATASHEET

GIPC2 Rabbit Polyclonal Antibody

CAT. NO. APA15709

KEY FEATURES

Target	GIPC2	Source / Host	Rabbit
Reactivity	Human, Mouse, Rat	Clonality	Polyclonal
Applications	WB	Conjugation	Unconjugated
Form / Buffer	Liquid in 0.42% Potassium phosphate, 0.87% Sodium chloride, pH 7.3, 30% glycerol, and 0.01% sodium azide.		Storage at -20°C

BACKGROUND

PDZ domain-containing protein GIPC2 (GIPC2). Belongs to the GIPC family Subunit: Probably interacts with SEMA5A Subcellular location: Cytoplasm Tissue specificity: Expressed at highest levels in ascending colon and at moderate levels in adult kidney. Expressed at low levels in adult pancreas and at very low levels in adult liver. Expression is down-regulated in several primary tumors, such as kidney, colon and rectal tumors

APPLICATION

To ensure optimal assay performance, AREX recommends conducting reagent titration tailored to each testing system for optimal detection results.

WB	1:500 - 1:1000
----	----------------

*Results are sample-specific. Please refer to your local assay conditions and test parameters for reference.

PRODUCT OVERVIEW

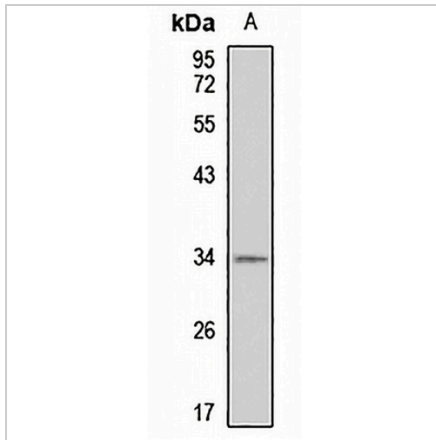
Description	Rabbit polyclonal antibody to GIPC2
Specificity	Recognizes endogenous levels of GIPC2 protein
Antibody Type	Primary antibody
Immunogen	Recombinant fusion protein of human GIPC2. The exact sequence is proprietary.
Purification	The antibody was purified by immunogen affinity chromatography.
Molecular Weight	Predicted: 34 kD; Observed: 34 kD
Form/Buffer	Liquid in 0.42% Potassium phosphate, 0.87% Sodium chloride, pH 7.3, 30% glycerol, and 0.01% sodium azide.
Alternative Names	PDZ domain-containing protein GIPC2
Gene Symbol	GIPC2
Entrez Gene	54810(Human); 54120(Mouse); 365960(Rat)
SwissProt	Q8TF65(Human); Q9Z2H7(Mouse); Q498D9(Rat)

*AREX continuously optimizes our products. Webpage content may not reflect the latest updates. For inquiries, please contact info@arexbio.com or your local distributor.

*Clone Number, Reactivity, Source/Host and Clonality can be found in the product name and Key Features section above.

DATASHEET**GIPC2 Rabbit Polyclonal Antibody**

CAT. NO. APA15709

DATA

Western blot analysis of GIPC2 expression in U251MG (A) whole cell lysates. (Predicted band size: 34 kD; Observed band size: 34 kD)

STORAGE

Store at 4°C short term. For long term storage, store at -20°C, avoiding freeze/thaw cycles.

NOTE

For Research Use Only. Not for diagnostic, therapeutics, prophylactic or in vivo use.