

DATASHEET

Connexin 47 Rabbit Polyclonal Antibody

CAT. NO. APA15710

KEY FEATURES

Target	Connexin 47	Source / Host	Rabbit
Reactivity	Human, Mouse, Rat	Clonality	Polyclonal
Applications	WB, IHC	Conjugation	Unconjugated
Form / Buffer	Liquid in 0.42% Potassium phosphate, 0.87% Sodium chloride, pH 7.3, 30% glycerol, and 0.01% sodium azide.		Storage at -20°C

BACKGROUND

One gap junction consists of a cluster of closely packed pairs of transmembrane channels, the connexons, through which materials of low MW diffuse from one cell to a neighboring cell. May play a role in myelination in central and peripheral nervous systems.

APPLICATION

To ensure optimal assay performance, AREX recommends conducting reagent titration tailored to each testing system for optimal detection results.

WB	1:500 - 1:2000
IHC	1:50 - 1:200

*Results are sample-specific. Please refer to your local assay conditions and test parameters for reference.

PRODUCT OVERVIEW

Description	Rabbit polyclonal antibody to Connexin 47
Specificity	Recognizes endogenous levels of Connexin 47 protein
Antibody Type	Primary antibody
Immunogen	KLH-conjugated synthetic peptide of human Connexin 47. The exact sequence is proprietary.
Purification	The antibody was purified by immunogen affinity chromatography.
Molecular Weight	Predicted: 47 kD; Observed: 50 kD
Form/Buffer	Liquid in 0.42% Potassium phosphate, 0.87% Sodium chloride, pH 7.3, 30% glycerol, and 0.01% sodium azide.
Alternative Names	GJA12; Gap junction gamma-2 protein; Connexin-46.6; Cx46.6; Connexin-47; Cx47; Gap junction alpha-12 protein
Gene Symbol	GJC2
Entrez Gene	57165(Human); 118454(Mouse); 497913(Rat)
SwissProt	Q5T442(Human); Q8BQU6(Mouse); Q80XF7(Rat)

*AREX continuously optimizes our products. Webpage content may not reflect the latest updates. For inquiries, please contact info@arexbio.com or your local distributor.

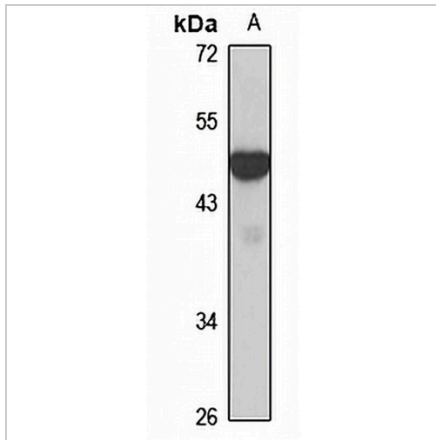
*Clone Number, Reactivity, Source/Host and Clonality can be found in the product name and Key Features section above.

DATASHEET

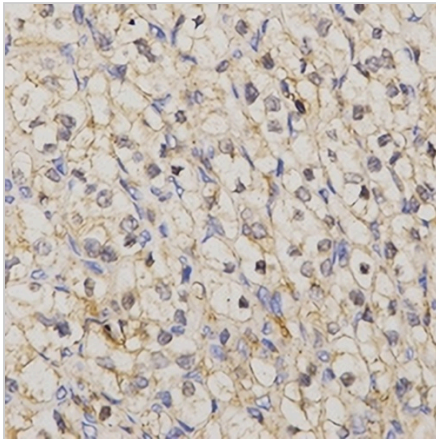
Connexin 47 Rabbit Polyclonal Antibody

CAT. NO. APA15710

DATA



Western blot analysis of Connexin 47 expression in mouse brain (A) whole cell lysates. (Predicted band size: 47 kD; Observed band size: 50 kD)



Immunohistochemical analysis of Connexin 47 staining in human kidney cancer formalin fixed paraffin embedded tissue section. The section was pre-treated using heat mediated antigen retrieval with sodium citrate buffer (pH 6.0). The section was then incubated with the antibody at room temperature and detected using an HRP conjugated compact polymer system. DAB was used as the chromogen. The section was then counterstained with haematoxylin and mounted with DPX.

STORAGE

Store at 4°C short term. For long term storage, store at -20°C, avoiding freeze/thaw cycles.

NOTE

For Research Use Only. Not for diagnostic, therapeutics, prophylactic or in vivo use.