

DATASHEET

Gastrokine-1 Rabbit Polyclonal Antibody

CAT. NO. APA15711

KEY FEATURES

| | | | |
|---------------|---|---------------|---------------------|
| Target | Gastrokine-1 | Source / Host | Rabbit |
| Reactivity | Human, Mouse | Clonality | Polyclonal |
| Applications | WB | Conjugation | Unconjugated |
| Form / Buffer | Liquid in 0.42% Potassium phosphate, 0.87% Sodium chloride, pH 7.3, 30% glycerol, and 0.01% sodium azide. | | Storage at -20°C |

BACKGROUND

Has mitogenic activity and may be involved in maintaining the integrity of the gastric mucosal epithelium.

APPLICATION

To ensure optimal assay performance, AREX recommends conducting reagent titration tailored to each testing system for optimal detection results.

| | |
|----|----------------|
| WB | 1:500 - 1:1000 |
|----|----------------|

*Results are sample-specific. Please refer to your local assay conditions and test parameters for reference.

PRODUCT OVERVIEW

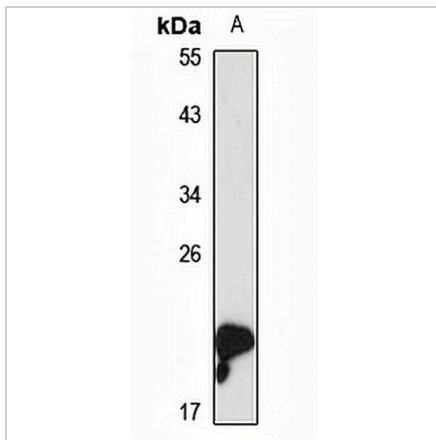
| | |
|-------------------|---|
| Description | Rabbit polyclonal antibody to Gastrokine-1 |
| Specificity | Recognizes endogenous levels of Gastrokine-1 protein |
| Antibody Type | Primary antibody |
| Immunogen | Recombinant fusion protein of human Gastrokine-1. The exact sequence is proprietary. |
| Purification | The antibody was purified by immunogen affinity chromatography. |
| Molecular Weight | Predicted: 21 kD; Observed: 22 kD |
| Form/Buffer | Liquid in 0.42% Potassium phosphate, 0.87% Sodium chloride, pH 7.3, 30% glycerol, and 0.01% sodium azide. |
| Alternative Names | AMP18; CA11; Gastrokine-1; 18 kDa antrum mucosa protein; AMP-18; Protein CA11 |
| Gene Symbol | GKN1 |
| Entrez Gene | 56287(Human); 66283(Mouse) |
| SwissProt | Q9NS71(Human); Q9CR36(Mouse) |

*AREX continuously optimizes our products. Webpage content may not reflect the latest updates. For inquiries, please contact info@arexbio.com or your local distributor.

*Clone Number, Reactivity, Source/Host and Clonality can be found in the product name and Key Features section above.

DATASHEET**Gastrokine-1 Rabbit Polyclonal Antibody**

CAT. NO. APA15711

DATA

Western blot analysis of Gastrokine-1 expression in mouse stomach (A) whole cell lysates.
(Predicted band size: 21 kD; Observed band size: 22 kD)

STORAGE

Store at 4°C short term. For long term storage, store at -20°C, avoiding freeze/thaw cycles.

NOTE

For Research Use Only. Not for diagnostic, therapeutics, prophylactic or in vivo use.