

DATASHEET

GLE1 Rabbit Polyclonal Antibody

CAT. NO. APA15713

KEY FEATURES

Target	GLE1	Source / Host	Rabbit
Reactivity	Human, Mouse, Rat	Clonality	Polyclonal
Applications	WB	Conjugation	Unconjugated
Form / Buffer	Liquid in 0.42% Potassium phosphate, 0.87% Sodium chloride, pH 7.3, 30% glycerol, and 0.01% sodium azide.		Storage at -20°C

BACKGROUND

Required for the export of mRNAs containing poly(A) tails from the nucleus into the cytoplasm. May be involved in the terminal step of the mRNA transport through the nuclear pore complex (NPC).

APPLICATION

To ensure optimal assay performance, AREX recommends conducting reagent titration tailored to each testing system for optimal detection results.

WB	1:500 - 1:2000
----	----------------

*Results are sample-specific. Please refer to your local assay conditions and test parameters for reference.

PRODUCT OVERVIEW

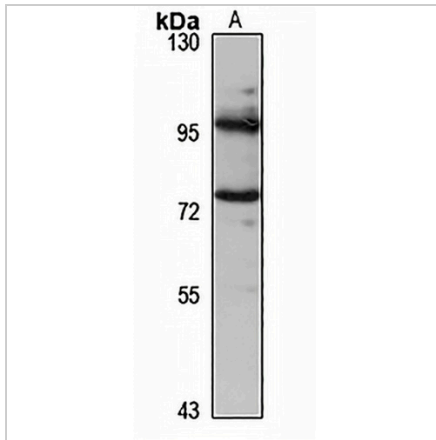
Description	Rabbit polyclonal antibody to GLE1
Specificity	Recognizes endogenous levels of GLE1 protein
Antibody Type	Primary antibody
Immunogen	Recombinant fusion protein of human GLE1. The exact sequence is proprietary.
Purification	The antibody was purified by immunogen affinity chromatography.
Molecular Weight	Predicted: 75; Observed: 75 kD
Form/Buffer	Liquid in 0.42% Potassium phosphate, 0.87% Sodium chloride, pH 7.3, 30% glycerol, and 0.01% sodium azide.
Alternative Names	GLE1L; Nucleoporin GLE1; hGLE1; GLE1-like protein
Gene Symbol	GLE1
Entrez Gene	2733(Human); 74412(Mouse); 362098(Rat)
SwissProt	Q53GS7(Human); Q8R322(Mouse); Q4KLN4(Rat)

*AREX continuously optimizes our products. Webpage content may not reflect the latest updates. For inquiries, please contact info@arexbio.com or your local distributor.

*Clone Number, Reactivity, Source/Host and Clonality can be found in the product name and Key Features section above.

DATASHEET**GLE1 Rabbit Polyclonal Antibody**

CAT. NO. APA15713

DATA

Western blot analysis of GLE1 expression in Jurkat (A) whole cell lysates. (Predicted band size: 75; 79 kD; Observed band size: 75 kD)

STORAGE

Store at 4°C short term. For long term storage, store at -20°C, avoiding freeze/thaw cycles.

NOTE

For Research Use Only. Not for diagnostic, therapeutics, prophylactic or in vivo use.