

**DATASHEET**

**GLG1 Rabbit Polyclonal Antibody**

CAT. NO. APA15714

**KEY FEATURES**

Target	GLG1	Source / Host	Rabbit
Reactivity	Human, Mouse	Clonality	Polyclonal
Applications	WB	Conjugation	Unconjugated
Form / Buffer	Liquid in 0.42% Potassium phosphate, 0.87% Sodium chloride, pH 7.3, 30% glycerol, and 0.01% sodium azide.		Storage at -20°C

**BACKGROUND**

Binds fibroblast growth factor and E-selectin (cell-adhesion lectin on endothelial cells mediating the binding of neutrophils).

**APPLICATION**

To ensure optimal assay performance, AREX recommends conducting reagent titration tailored to each testing system for optimal detection results.

WB	1:500 - 1:2000
----	----------------

\*Results are sample-specific. Please refer to your local assay conditions and test parameters for reference.

**PRODUCT OVERVIEW**

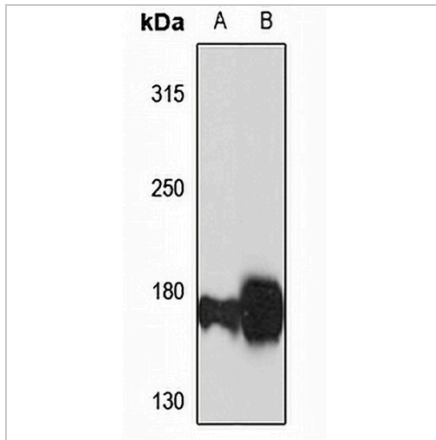
Description	Rabbit polyclonal antibody to GLG1
Specificity	Recognizes endogenous levels of GLG1 protein
Antibody Type	Primary antibody
Immunogen	Recombinant fusion protein of human GLG1. The exact sequence is proprietary.
Purification	The antibody was purified by immunogen affinity chromatography.
Molecular Weight	Predicted: 134; Observed: 175 kD
Form/Buffer	Liquid in 0.42% Potassium phosphate, 0.87% Sodium chloride, pH 7.3, 30% glycerol, and 0.01% sodium azide.
Alternative Names	CFR1; ESL1; MG160; Golgi apparatus protein 1; CFR-1; Cysteine-rich fibroblast growth factor receptor; E-selectin ligand 1; ESL-1; Golgi sialoglycoprotein MG-160
Gene Symbol	GLG1
Entrez Gene	2734(Human); 20340(Mouse)
SwissProt	Q92896(Human); Q61543(Mouse)

\*AREX continuously optimizes our products. Webpage content may not reflect the latest updates. For inquiries, please contact [info@arexbio.com](mailto:info@arexbio.com) or your local distributor.

\*Clone Number, Reactivity, Source/Host and Clonality can be found in the product name and Key Features section above.

**DATASHEET****GLG1 Rabbit Polyclonal Antibody**

CAT. NO. APA15714

**DATA**

Western blot analysis of GLG1 expression in A549 (A), mouse liver (B) whole cell lysates.  
(Predicted band size: 134; 135; 137 kD; Observed band size: 175 kD)

**STORAGE**

Store at 4°C short term. For long term storage, store at -20°C, avoiding freeze/thaw cycles.

**NOTE**

For Research Use Only. Not for diagnostic, therapeutics, prophylactic or in vivo use.