

**DATASHEET**

**GLIS3 Rabbit Polyclonal Antibody**

CAT. NO. APA15715

**KEY FEATURES**

Target	GLIS3	Source / Host	Rabbit
Reactivity	Human, Mouse	Clonality	Polyclonal
Applications	WB	Conjugation	Unconjugated
Form / Buffer	Liquid in 0.42% Potassium phosphate, 0.87% Sodium chloride, pH 7.3, 30% glycerol, and 0.01% sodium azide.		Storage at -20°C

**BACKGROUND**

Acts both as a repressor and an activator of transcription. Binds to the consensus sequence 5'-GACCACCCAC-3'.

**APPLICATION**

To ensure optimal assay performance, AREX recommends conducting reagent titration tailored to each testing system for optimal detection results.

WB	1:500 - 1:2000
----	----------------

\*Results are sample-specific. Please refer to your local assay conditions and test parameters for reference.

**PRODUCT OVERVIEW**

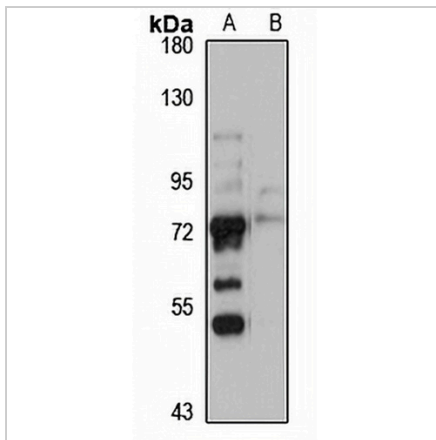
Description	Rabbit polyclonal antibody to GLIS3
Specificity	Recognizes endogenous levels of GLIS3 protein
Antibody Type	Primary antibody
Immunogen	Recombinant fusion protein of human GLIS3. The exact sequence is proprietary.
Purification	The antibody was purified by immunogen affinity chromatography.
Molecular Weight	Predicted: 83; Observed: 72 kD
Form/Buffer	Liquid in 0.42% Potassium phosphate, 0.87% Sodium chloride, pH 7.3, 30% glycerol, and 0.01% sodium azide.
Alternative Names	ZNF515; Zinc finger protein GLIS3; GLI-similar 3; Zinc finger protein 515
Gene Symbol	GLIS3
Entrez Gene	169792(Human); 226075(Mouse)
SwissProt	Q8NEA6(Human); Q6XP49(Mouse)

\*AREX continuously optimizes our products. Webpage content may not reflect the latest updates. For inquiries, please contact [info@arexbio.com](mailto:info@arexbio.com) or your local distributor.

\*Clone Number, Reactivity, Source/Host and Clonality can be found in the product name and Key Features section above.

**DATASHEET****GLIS3 Rabbit Polyclonal Antibody**

CAT. NO. APA15715

**DATA**

Western blot analysis of GLIS3 expression in HepG2 (A), mouse kidney (B) whole cell lysates. (Predicted band size: 83; 99 kD; Observed band size: 72 kD)

**STORAGE**

Store at 4°C short term. For long term storage, store at -20°C, avoiding freeze/thaw cycles.

**NOTE**

For Research Use Only. Not for diagnostic, therapeutics, prophylactic or in vivo use.