

DATASHEET

GLOD4 Rabbit Polyclonal Antibody

CAT. NO. APA15716

KEY FEATURES

Target	GLOD4	Source / Host	Rabbit
Reactivity	Human, Mouse, Rat	Clonality	Polyclonal
Applications	WB	Conjugation	Unconjugated
Form / Buffer	Liquid in 0.42% Potassium phosphate, 0.87% Sodium chloride, pH 7.3, 30% glycerol, and 0.01% sodium azide.		Storage at -20°C

BACKGROUND

Glyoxalase domain-containing protein 4 (GLOD4). Belongs to the glyoxalase I family Subunit: Interacts with NUDT9 Subcellular location: Mitochondrion Tissue specificity: Expressed in heart, brain, liver, kidney, pancreas and placenta. Not expressed in skeletal muscle and lung

APPLICATION

To ensure optimal assay performance, AREX recommends conducting reagent titration tailored to each testing system for optimal detection results.

WB	1:500 - 1:2000
----	----------------

*Results are sample-specific. Please refer to your local assay conditions and test parameters for reference.

PRODUCT OVERVIEW

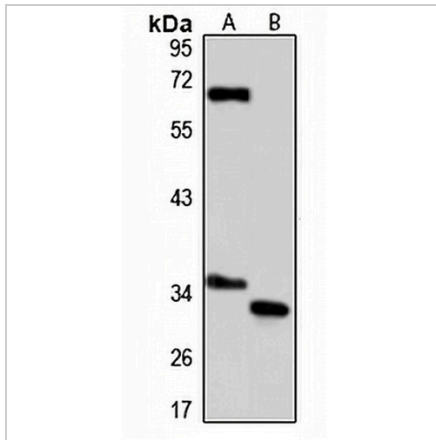
Description	Rabbit polyclonal antibody to GLOD4
Specificity	Recognizes endogenous levels of GLOD4 protein
Antibody Type	Primary antibody
Immunogen	Recombinant fusion protein of human GLOD4. The exact sequence is proprietary.
Purification	The antibody was purified by immunogen affinity chromatography.
Molecular Weight	Predicted: 21; Observed: 30-37 kD
Form/Buffer	Liquid in 0.42% Potassium phosphate, 0.87% Sodium chloride, pH 7.3, 30% glycerol, and 0.01% sodium azide.
Alternative Names	C17orf25; Glyoxalase domain-containing protein 4
Gene Symbol	GLOD4
Entrez Gene	51031(Human); 67201(Mouse); 363644(Rat)
SwissProt	Q9HC38(Human); Q9CPV4(Mouse); Q5I0D1(Rat)

*AREX continuously optimizes our products. Webpage content may not reflect the latest updates. For inquiries, please contact info@arexbio.com or your local distributor.

*Clone Number, Reactivity, Source/Host and Clonality can be found in the product name and Key Features section above.

DATASHEET**GLOD4 Rabbit Polyclonal Antibody**

CAT. NO. APA15716

DATA

Western blot analysis of GLOD4 expression in HepG2 (A), mouse brain (B) whole cell lysates. (Predicted band size: 21; 33; 34 kD; Observed band size: 30-37 kD)

STORAGE

Store at 4°C short term. For long term storage, store at -20°C, avoiding freeze/thaw cycles.

NOTE

For Research Use Only. Not for diagnostic, therapeutics, prophylactic or in vivo use.