

DATASHEET

GlyR alpha 1 Rabbit Polyclonal Antibody

CAT. NO. APA15717

KEY FEATURES

Target	GlyR alpha 1	Source / Host	Rabbit
Reactivity	Human, Mouse, Rat	Clonality	Polyclonal
Applications	WB	Conjugation	Unconjugated
Form / Buffer	Liquid in 0.42% Potassium phosphate, 0.87% Sodium chloride, pH 7.3, 30% glycerol, and 0.01% sodium azide.		Storage at -20°C

BACKGROUND

Subunit of heteromeric glycine-gated chloride channels . Plays an important role in the down-regulation of neuronal excitability . Contributes to the generation of inhibitory postsynaptic currents . Channel activity is potentiated by ethanol . Potentiation of channel activity by intoxicating levels of ethanol contribute to the sedative effects of ethanol .

APPLICATION

To ensure optimal assay performance, AREX recommends conducting reagent titration tailored to each testing system for optimal detection results.

WB	1:500 - 1:2000
----	----------------

*Results are sample-specific. Please refer to your local assay conditions and test parameters for reference.

PRODUCT OVERVIEW

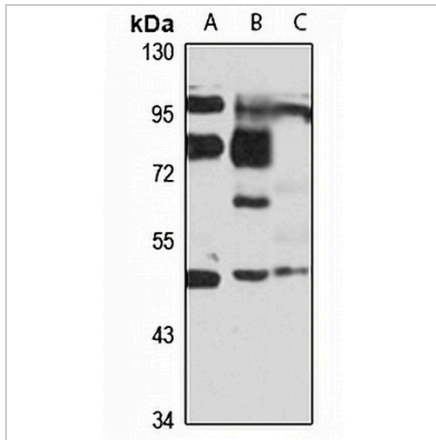
Description	Rabbit polyclonal antibody to GlyR alpha 1
Specificity	Recognizes endogenous levels of GlyR alpha 1 protein
Antibody Type	Primary antibody
Immunogen	Recombinant fusion protein of human GlyR alpha 1. The exact sequence is proprietary.
Purification	The antibody was purified by immunogen affinity chromatography.
Molecular Weight	Predicted: 51; Observed: 53 kD
Form/Buffer	Liquid in 0.42% Potassium phosphate, 0.87% Sodium chloride, pH 7.3, 30% glycerol, and 0.01% sodium azide.
Alternative Names	Glycine receptor subunit alpha-1; Glycine receptor 48 kDa subunit; Glycine receptor strychnine-binding subunit
Gene Symbol	GLRA1
Entrez Gene	2741(Human); 25674(Rat)
SwissProt	P23415(Human); Q64018(Mouse); P07727(Rat)

*AREX continuously optimizes our products. Webpage content may not reflect the latest updates. For inquiries, please contact info@arexbio.com or your local distributor.

*Clone Number, Reactivity, Source/Host and Clonality can be found in the product name and Key Features section above.

DATASHEET**GlyR alpha 1 Rabbit Polyclonal Antibody**

CAT. NO. APA15717

DATA

Western blot analysis of GlyR alpha 1 expression in U87MG (A), mouse brain (B), rat testis (C) whole cell lysates. (Predicted band size: 51; 52 kD; Observed band size: 53 kD)

STORAGE

Store at 4°C short term. For long term storage, store at -20°C, avoiding freeze/thaw cycles.

NOTE

For Research Use Only. Not for diagnostic, therapeutics, prophylactic or in vivo use.