

**DATASHEET**

**GlyR alpha 2 Rabbit Polyclonal Antibody**

CAT. NO. APA15718

**KEY FEATURES**

|               |   |               |                     |
|---------------|---|---------------|---------------------|
| Target        | GlyR alpha 2  | Source / Host | Rabbit              |
| Reactivity    | Human, Mouse, Rat   | Clonality     | Polyclonal          |
| Applications  | WB, IF/ICC  | Conjugation   | Unconjugated        |
| Form / Buffer | Liquid in 0.42% Potassium phosphate, 0.87% Sodium chloride, pH 7.3, 30% glycerol, and 0.01% sodium azide. |               | Storage<br>at -20°C |

**BACKGROUND**

Subunit of heteromeric glycine-gated chloride channels . Plays a role in synaptic plasticity . Contributes to the generation of inhibitory postsynaptic currents, and is involved in the down-regulation of neuronal excitability . Plays a role in cellular responses to ethanol .

**APPLICATION**

To ensure optimal assay performance, AREX recommends conducting reagent titration tailored to each testing system for optimal detection results.

|        |                |
|--------|----------------|
| WB     | 1:500 - 1:2000 |
| IF/ICC | 1:50 - 1:200   |

\*Results are sample-specific. Please refer to your local assay conditions and test parameters for reference.

**PRODUCT OVERVIEW**

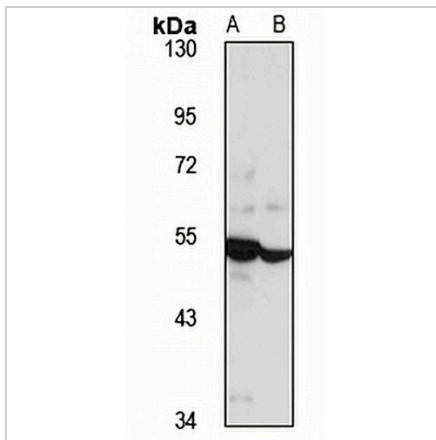
|                   |   |
|-------------------|---|
| Description       | Rabbit polyclonal antibody to GlyR alpha 2  |
| Specificity       | Recognizes endogenous levels of GlyR alpha 2 protein  |
| Antibody Type     | Primary antibody  |
| Immunogen         | Recombinant fusion protein of human GlyR alpha 2. The exact sequence is proprietary.                      |
| Purification      | The antibody was purified by immunogen affinity chromatography.   |
| Molecular Weight  | Predicted: 42; Observed: 52 kD  |
| Form/Buffer       | Liquid in 0.42% Potassium phosphate, 0.87% Sodium chloride, pH 7.3, 30% glycerol, and 0.01% sodium azide. |
| Alternative Names | Glycine receptor subunit alpha-2  |
| Gene Symbol       | GLRA2   |
| Entrez Gene       | 2742(Human); 237213(Mouse); 100910572; 24397(Rat)   |
| SwissProt         | P23416(Human); Q7TNC8(Mouse); P22771(Rat)   |

\*AREX continuously optimizes our products. Webpage content may not reflect the latest updates. For inquiries, please contact [info@arexbio.com](mailto:info@arexbio.com) or your local distributor.

\*Clone Number, Reactivity, Source/Host and Clonality can be found in the product name and Key Features section above.

**DATASHEET****GlyR alpha 2 Rabbit Polyclonal Antibody**

CAT. NO. APA15718

**DATA**

Western blot analysis of GlyR alpha 2 expression in mouse spinal cord (A), rat brain (B) whole cell lysates. (Predicted band size: 42; 51; 52 kD; Observed band size: 52 kD)

**STORAGE**

Store at 4°C short term. For long term storage, store at -20°C, avoiding freeze/thaw cycles.

**NOTE**

For Research Use Only. Not for diagnostic, therapeutics, prophylactic or in vivo use.