

DATASHEET

GLS2 Rabbit Polyclonal Antibody

CAT. NO. APA15720

KEY FEATURES

Target	GLS2	Source / Host	Rabbit
Reactivity	Human, Mouse, Rat	Clonality	Polyclonal
Applications	WB	Conjugation	Unconjugated
Form / Buffer	Liquid in 0.42% Potassium phosphate, 0.87% Sodium chloride, pH 7.3, 30% glycerol, and 0.01% sodium azide.		Storage at -20°C

BACKGROUND

Plays an important role in the regulation of glutamine catabolism. Promotes mitochondrial respiration and increases ATP generation in cells by catalyzing the synthesis of glutamate and alpha-ketoglutarate. Increases cellular anti-oxidant function via NADH and glutathione production. May play a role in preventing tumor proliferation.

APPLICATION

To ensure optimal assay performance, AREX recommends conducting reagent titration tailored to each testing system for optimal detection results.

WB	1:500 - 1:1000
----	----------------

*Results are sample-specific. Please refer to your local assay conditions and test parameters for reference.

PRODUCT OVERVIEW

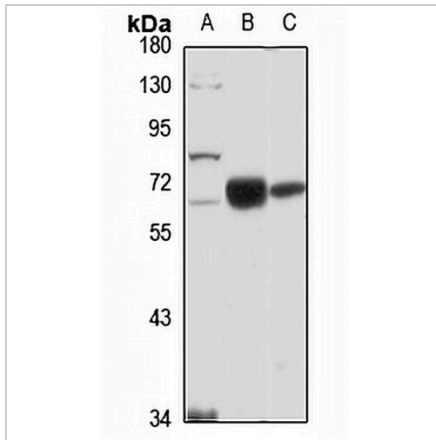
Description	Rabbit polyclonal antibody to GLS2
Specificity	Recognizes endogenous levels of GLS2 protein
Antibody Type	Primary antibody
Immunogen	KLH-conjugated synthetic peptide of human GLS2. The exact sequence is proprietary.
Purification	The antibody was purified by immunogen affinity chromatography.
Molecular Weight	Predicted: 23; Observed: 66 kD
Form/Buffer	Liquid in 0.42% Potassium phosphate, 0.87% Sodium chloride, pH 7.3, 30% glycerol, and 0.01% sodium azide.
Alternative Names	GA; Glutaminase liver isoform mitochondrial; GLS; L-glutaminase; L-glutamine amidohydrolase
Gene Symbol	GLS2
Entrez Gene	27165(Human); 216456(Mouse); 192268(Rat)
SwissProt	Q9UI32(Human); Q571F8(Mouse); P28492(Rat)

*AREX continuously optimizes our products. Webpage content may not reflect the latest updates. For inquiries, please contact info@arexbio.com or your local distributor.

*Clone Number, Reactivity, Source/Host and Clonality can be found in the product name and Key Features section above.

DATASHEET**GLS2 Rabbit Polyclonal Antibody**

CAT. NO. APA15720

DATA

Western blot analysis of GLS2 expression in HEK293T (A), mouse lung (B), rat brain (C) whole cell lysates. (Predicted band size: 23; 66 kD; Observed band size: 66 kD)

STORAGE

Store at 4°C short term. For long term storage, store at -20°C, avoiding freeze/thaw cycles.

NOTE

For Research Use Only. Not for diagnostic, therapeutics, prophylactic or in vivo use.