

DATASHEET

GMPR Rabbit Polyclonal Antibody

CAT. NO. APA15725

KEY FEATURES

Target	GMPR	Source / Host	Rabbit
Reactivity	Human, Mouse, Rat	Clonality	Polyclonal
Applications	WB	Conjugation	Unconjugated
Form / Buffer	Liquid in 0.42% Potassium phosphate, 0.87% Sodium chloride, pH 7.3, 30% glycerol, and 0.01% sodium azide.		Storage at -20°C

BACKGROUND

Catalyzes the irreversible NADPH-dependent deamination of GMP to IMP. It functions in the conversion of nucleobase, nucleoside and nucleotide derivatives of G to A nucleotides, and in maintaining the intracellular balance of A and G nucleotides.

APPLICATION

To ensure optimal assay performance, AREX recommends conducting reagent titration tailored to each testing system for optimal detection results.

WB	1:500 - 1:1000
----	----------------

*Results are sample-specific. Please refer to your local assay conditions and test parameters for reference.

PRODUCT OVERVIEW

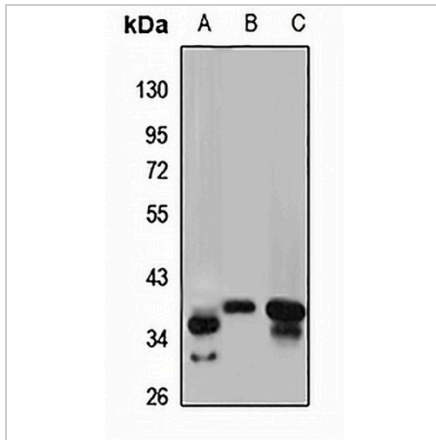
Description	Rabbit polyclonal antibody to GMPR
Specificity	Recognizes endogenous levels of GMPR protein
Antibody Type	Primary antibody
Immunogen	Recombinant fusion protein of human GMPR. The exact sequence is proprietary.
Purification	The antibody was purified by immunogen affinity chromatography.
Molecular Weight	Predicted: 37 kD; Observed: 37 kD
Form/Buffer	Liquid in 0.42% Potassium phosphate, 0.87% Sodium chloride, pH 7.3, 30% glycerol, and 0.01% sodium azide.
Alternative Names	GMPR1; GMP reductase 1; Guanosine 5'-monophosphate oxidoreductase 1; Guanosine monophosphate reductase 1
Gene Symbol	GMPR
Entrez Gene	2766(Human); 66355(Mouse); 117533(Rat)
SwissProt	P36959(Human); Q9DCZ1(Mouse); Q9Z244(Rat)

*AREX continuously optimizes our products. Webpage content may not reflect the latest updates. For inquiries, please contact info@arexbio.com or your local distributor.

*Clone Number, Reactivity, Source/Host and Clonality can be found in the product name and Key Features section above.

DATASHEET**GMPR Rabbit Polyclonal Antibody**

CAT. NO. APA15725

DATA

Western blot analysis of GMPR expression in K562 (A), mouse heart (B), mouse kidney (C) whole cell lysates. (Predicted band size: 37 kD; Observed band size: 37 kD)

STORAGE

Store at 4°C short term. For long term storage, store at -20°C, avoiding freeze/thaw cycles.

NOTE

For Research Use Only. Not for diagnostic, therapeutics, prophylactic or in vivo use.