

DATASHEET
G alpha 15 Rabbit Polyclonal Antibody
CAT. NO. APA15726
KEY FEATURES

Target	G alpha 15	Source / Host	Rabbit
Reactivity	Human, Mouse	Clonality	Polyclonal
Applications	WB, IHC	Conjugation	Unconjugated
Form / Buffer	Liquid in 0.42% Potassium phosphate, 0.87% Sodium chloride, pH 7.3, 30% glycerol, and 0.01% sodium azide.		Storage at-20°C

BACKGROUND

Member of the G-protein alpha subunit family that plays a crucial role in intracellular signaling. Functions as a molecular switch, transducing signals from G protein-coupled receptors (GPCRs) to downstream effectors. In collaboration with the adapter protein TTC1, promotes HRAS activation and ERK1/2 phosphorylation independently of phospholipase Cbeta signaling to downstream effectors. In collaboration with the adapter protein TTC1, promotes HRAS activation and ERK1/2 phosphorylation independently of phospholipase Cbeta signaling. Also initiates EMR2-mediated signaling, leading to activation of Akt, MAPK, and NF-kappa-B, which in turn drives macrophage differentiation and inflammatory responses.

APPLICATION

To ensure optimal assay performance, AREX recommends conducting reagent titration tailored to each testing system for optimal detection results.

WB	1:500 - 1:2000
IHC	1:50 - 1:200

*Results are sample-specific. Please refer to your local assay conditions and test parameters for reference.

PRODUCT OVERVIEW

Description	Rabbit polyclonal antibody to G alpha 15
Specificity	Recognizes endogenous levels of G alpha 15 protein
Antibody Type	Primary antibody
Immunogen	Recombinant fusion protein of human G alpha 15. The exact sequence is proprietary.
Purification	The antibody was purified by immunogen affinity chromatography.
Molecular Weight	Predicted: 43 kD; Observed: 43 kD
Form/Buffer	Liquid in 0.42% Potassium phosphate, 0.87% Sodium chloride, pH 7.3, 30% glycerol, and 0.01% sodium azide.
Alternative Names	GNA16; Guanine nucleotide-binding protein subunit alpha-15; G alpha-15; G-protein subunit alpha-15; Epididymis tissue protein Li 17E; Guanine nucleotide-binding protein subunit alpha-16; G alpha-16; G-protein subunit alpha-16
Gene Symbol	GNA15
Entrez Gene	2769(Human); 14676(Mouse)
SwissProt	P30679(Human); P30678(Mouse)

*AREX continuously optimizes our products. Webpage content may not reflect the latest updates. For inquiries, please contact info@arex.bio or your local distributor.

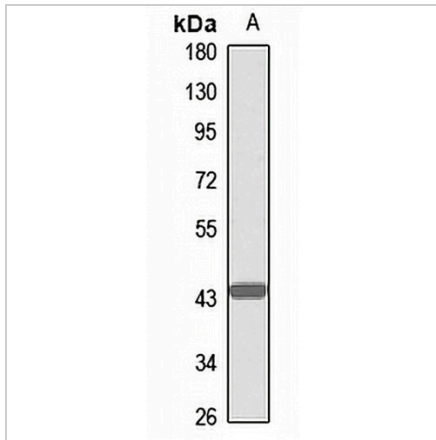
*Clone Number, Reactivity, Source/Host and Clonality can be found in the product name and Key Features section above.

DATASHEET

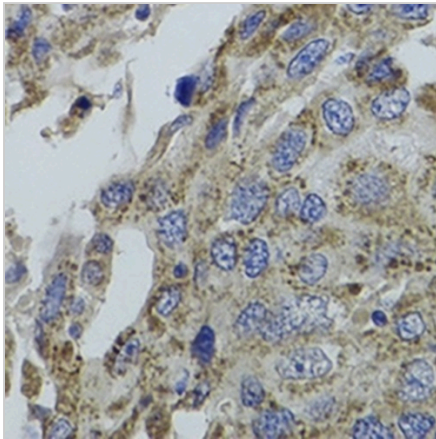
G alpha 15 Rabbit Polyclonal Antibody

CAT. NO. APA15726

DATA



Western blot analysis of G alpha 15 expression in mouse heart (A) whole cell lysates. (Predicted band size: 43 kD; Observed band size: 43 kD)



Immunohistochemical analysis of G alpha 15 staining in human breast cancer formalin fixed paraffin embedded tissue section. The section was pre-treated using heat mediated antigen retrieval with sodium citrate buffer (pH 6.0). The section was then incubated with the antibody at room temperature and detected using an HRP conjugated compact polymer system. DAB was used as the chromogen. The section was then counterstained with haematoxylin and mounted with DPX.

STORAGE

Store at 4°C short term. For long term storage, store at -20°C, avoiding freeze/thaw cycles.

NOTE

For Research Use Only. Not for diagnostic, therapeutics, prophylactic or in vivo use.