

DATASHEET

G beta 4 Rabbit Polyclonal Antibody

CAT. NO. APA15730

KEY FEATURES

Target	G beta 4	Source / Host	Rabbit
Reactivity	Human, Mouse, Rat	Clonality	Polyclonal
Applications	WB	Conjugation	Unconjugated
Form / Buffer	Liquid in 0.42% Potassium phosphate, 0.87% Sodium chloride, pH 7.3, 30% glycerol, and 0.01% sodium azide.		Storage at -20°C

BACKGROUND

Guanine nucleotide-binding proteins (G proteins) are involved as a modulator or transducer in various transmembrane signaling systems. The beta and gamma chains are required for the GTPase activity, for replacement of GDP by GTP, and for G protein-effector interaction.

APPLICATION

To ensure optimal assay performance, AREX recommends conducting reagent titration tailored to each testing system for optimal detection results.

WB	1:500 - 1:2000
----	----------------

*Results are sample-specific. Please refer to your local assay conditions and test parameters for reference.

PRODUCT OVERVIEW

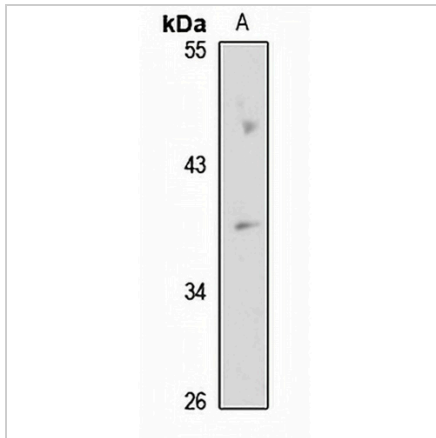
Description	Rabbit polyclonal antibody to G beta 4
Specificity	Recognizes endogenous levels of G beta 4 protein
Antibody Type	Primary antibody
Immunogen	Recombinant fusion protein of human G beta 4. The exact sequence is proprietary.
Purification	The antibody was purified by immunogen affinity chromatography.
Molecular Weight	Predicted: 37 kD; Observed: 38 kD
Form/Buffer	Liquid in 0.42% Potassium phosphate, 0.87% Sodium chloride, pH 7.3, 30% glycerol, and 0.01% sodium azide.
Alternative Names	Guanine nucleotide-binding protein subunit beta-4; Transducin beta chain 4
Gene Symbol	GNB4
Entrez Gene	59345(Human); 14696(Mouse); 294962(Rat)
SwissProt	Q9HAV0(Human); P29387(Mouse); O35353(Rat)

*AREX continuously optimizes our products. Webpage content may not reflect the latest updates. For inquiries, please contact info@arexbio.com or your local distributor.

*Clone Number, Reactivity, Source/Host and Clonality can be found in the product name and Key Features section above.

DATASHEET**G beta 4 Rabbit Polyclonal Antibody**

CAT. NO. APA15730

DATA

Western blot analysis of G beta 4 expression in A375 (A) whole cell lysates. (Predicted band size: 37 kD; Observed band size: 38 kD)

STORAGE

Store at 4°C short term. For long term storage, store at -20°C, avoiding freeze/thaw cycles.

NOTE

For Research Use Only. Not for diagnostic, therapeutics, prophylactic or in vivo use.