

DATASHEET

GOLGA5 Rabbit Polyclonal Antibody

CAT. NO. APA15737

KEY FEATURES

| | | | |
|---------------|---|---------------|---------------------|
| Target | GOLGA5 | Source / Host | Rabbit |
| Reactivity | Human, Mouse, Rat | Clonality | Polyclonal |
| Applications | WB, IF/ICC | Conjugation | Unconjugated |
| Form / Buffer | Liquid in 0.42% Potassium phosphate, 0.87% Sodium chloride, pH 7.3, 30% glycerol, and 0.01% sodium azide. | | Storage at -20°C |

BACKGROUND

Involved in maintaining Golgi structure. Stimulates the formation of Golgi stacks and ribbons. Involved in intra-Golgi retrograde transport.

APPLICATION

To ensure optimal assay performance, AREX recommends conducting reagent titration tailored to each testing system for optimal detection results.

| | |
|--------|----------------|
| WB | 1:500 - 1:2000 |
| IF/ICC | 1:50 - 1:200 |

*Results are sample-specific. Please refer to your local assay conditions and test parameters for reference.

PRODUCT OVERVIEW

| | |
|-------------------|--|
| Description | Rabbit polyclonal antibody to GOLGA5 |
| Specificity | Recognizes endogenous levels of GOLGA5 protein |
| Antibody Type | Primary antibody |
| Immunogen | Recombinant fusion protein of human GOLGA5. The exact sequence is proprietary. |
| Purification | The antibody was purified by immunogen affinity chromatography. |
| Molecular Weight | Predicted: 78; Observed: 100; 115 kD |
| Form/Buffer | Liquid in 0.42% Potassium phosphate, 0.87% Sodium chloride, pH 7.3, 30% glycerol, and 0.01% sodium azide. |
| Alternative Names | RETII; RFG5; Golgin subfamily A member 5; Cell proliferation-inducing gene 31 protein; Golgin-84; Protein Ret-II; RET-fused gene 5 protein |
| Gene Symbol | GOLGA5 |
| Entrez Gene | 9950(Human); 27277(Mouse); 299258(Rat) |
| SwissProt | Q8TBA6(Human); Q9QYE6(Mouse); Q3ZU82(Rat) |

*AREX continuously optimizes our products. Webpage content may not reflect the latest updates. For inquiries, please contact info@arexbio.com or your local distributor.

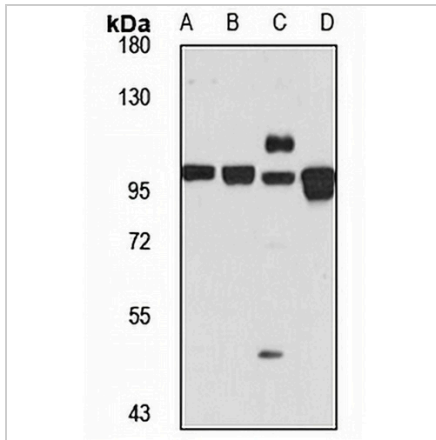
*Clone Number, Reactivity, Source/Host and Clonality can be found in the product name and Key Features section above.

DATASHEET

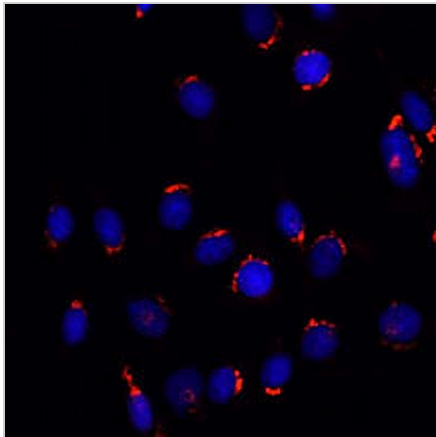
GOLGA5 Rabbit Polyclonal Antibody

CAT. NO. APA15737

DATA



Western blot analysis of GOLGA5 expression in HeLa (A), mouse brain (B), mouse heart (C), rat testis (D) whole cell lysates. (Predicted band size: 78; 83 kD; Observed band size: 100; 115 kD)



Immunofluorescent analysis of GOLGA5 staining in C6 cells. Formalin-fixed cells were permeabilized with 0.1% Triton X-100 in TBS for 5-10 minutes and blocked with 3% BSA-PBS for 30 minutes at room temperature. Cells were probed with the primary antibody in 3% BSA-PBS and incubated overnight at 4 °C in a humidified chamber. Cells were washed with PBST and incubated with a AREX® Fluor 594-conjugated secondary antibody (red) in PBS at room temperature in the dark. DAPI was used to stain the cell nuclei (blue).

STORAGE

Store at 4°C short term. For long term storage, store at -20°C, avoiding freeze/thaw cycles.

NOTE

For Research Use Only. Not for diagnostic, therapeutics, prophylactic or in vivo use.