

DATASHEET

GOLGA7 Rabbit Polyclonal Antibody

CAT. NO. APA15738

KEY FEATURES

Target	GOLGA7	Source / Host	Rabbit
Reactivity	Human, Mouse, Rat	Clonality	Polyclonal
Applications	WB	Conjugation	Unconjugated
Form / Buffer	Liquid in 0.42% Potassium phosphate, 0.87% Sodium chloride, pH 7.3, 30% glycerol, and 0.01% sodium azide.		Storage at-20°C

BACKGROUND

May be involved in protein transport from Golgi to cell surface. The ZDHHC9-GOLGA7 complex is a palmitoyltransferase specific for HRAS and NRAS.

APPLICATION

To ensure optimal assay performance, AREX recommends conducting reagent titration tailored to each testing system for optimal detection results.

WB	1:500 - 1:2000
----	----------------

*Results are sample-specific. Please refer to your local assay conditions and test parameters for reference.

PRODUCT OVERVIEW

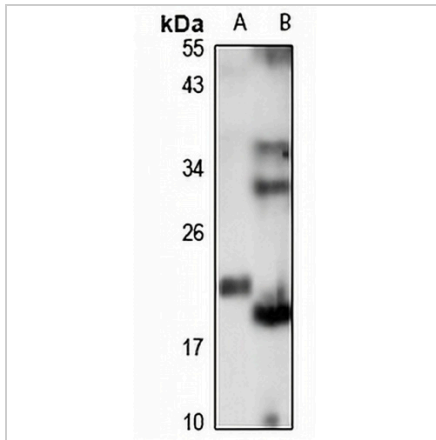
Description	Rabbit polyclonal antibody to GOLGA7
Specificity	Recognizes endogenous levels of GOLGA7 protein
Antibody Type	Primary antibody
Immunogen	Recombinant fusion protein of human GOLGA7. The exact sequence is proprietary.
Purification	The antibody was purified by immunogen affinity chromatography.
Molecular Weight	Predicted: 15 kD; Observed: 20 kD
Form/Buffer	Liquid in 0.42% Potassium phosphate, 0.87% Sodium chloride, pH 7.3, 30% glycerol, and 0.01% sodium azide.
Alternative Names	GCP16; Golgin subfamily A member 7; Golgi complex-associated protein of 16 kDa
Gene Symbol	GOLGA7
Entrez Gene	51125(Human); 57437(Mouse); 361171(Rat)
SwissProt	Q7Z5G4(Human); Q91W53(Mouse); Q6AYQ1(Rat)

*AREX continuously optimizes our products. Webpage content may not reflect the latest updates. For inquiries, please contact info@arexbio.com or your local distributor.

*Clone Number, Reactivity, Source/Host and Clonality can be found in the product name and Key Features section above.

DATASHEET**GOLGA7 Rabbit Polyclonal Antibody**

CAT. NO. APA15738

DATA

Western blot analysis of GOLGA7 expression in HT29 (A), mouse testis (B) whole cell lysates. (Predicted band size: 15 kD; Observed band size: 20 kD)

STORAGE

Store at 4°C short term. For long term storage, store at -20°C, avoiding freeze/thaw cycles.

NOTE

For Research Use Only. Not for diagnostic, therapeutics, prophylactic or in vivo use.