

DATASHEET

GOLPH4 Rabbit Polyclonal Antibody

CAT. NO. APA15739

KEY FEATURES

Target	GOLPH4	Source / Host	Rabbit
Reactivity	Human, Mouse	Clonality	Polyclonal
Applications	WB, IF/ICC	Conjugation	Unconjugated
Form / Buffer	Liquid in 0.42% Potassium phosphate, 0.87% Sodium chloride, pH 7.3, 30% glycerol, and 0.01% sodium azide.		Storage at -20°C

BACKGROUND

Plays a role in endosome to Golgi protein trafficking; mediates protein transport along the late endosome-bypass pathway from the early endosome to the Golgi.

APPLICATION

To ensure optimal assay performance, AREX recommends conducting reagent titration tailored to each testing system for optimal detection results.

WB	1:500 - 1:2000
IF/ICC	1:50 - 1:200

*Results are sample-specific. Please refer to your local assay conditions and test parameters for reference.

PRODUCT OVERVIEW

Description	Rabbit polyclonal antibody to GOLPH4
Specificity	Recognizes endogenous levels of GOLPH4 protein
Antibody Type	Primary antibody
Immunogen	Recombinant fusion protein of human GOLPH4. The exact sequence is proprietary.
Purification	The antibody was purified by immunogen affinity chromatography.
Molecular Weight	Predicted: 81 kD; Observed: 130; 80 kD
Form/Buffer	Liquid in 0.42% Potassium phosphate, 0.87% Sodium chloride, pH 7.3, 30% glycerol, and 0.01% sodium azide.
Alternative Names	GIMPC; GOLPH4; GPP130; Golgi integral membrane protein 4; Golgi integral membrane protein cis; GIMPc; Golgi phosphoprotein 4; Golgi-localized phosphoprotein of 130 kDa; Golgi phosphoprotein of 130 kDa
Gene Symbol	GOLIM4
Entrez Gene	27333(Human); 73124(Mouse)
SwissProt	O00461(Human); Q8BXA1(Mouse)

*AREX continuously optimizes our products. Webpage content may not reflect the latest updates. For inquiries, please contact info@arexbio.com or your local distributor.

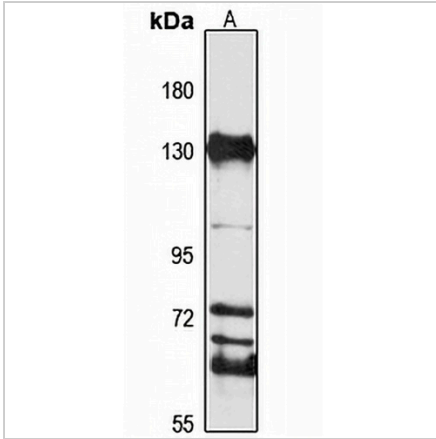
*Clone Number, Reactivity, Source/Host and Clonality can be found in the product name and Key Features section above.

DATASHEET

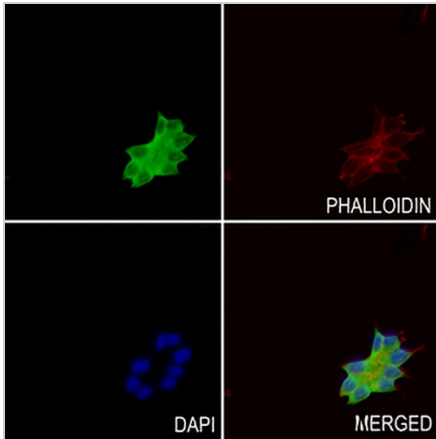
GOLPH4 Rabbit Polyclonal Antibody

CAT. NO. APA15739

DATA



Western blot analysis of GOLPH4 expression in HeLa (A) whole cell lysates. (Predicted band size: 81 kDa; Observed band size: 130; 80 kDa)



Immunofluorescent analysis of GOLPH4 staining in 22RV1 cells. Formalin-fixed cells were permeabilized with 0.1% Triton X-100 in TBS for 5-10 minutes and blocked with 3% BSA-PBS for 30 minutes at room temperature. Cells were probed with the primary antibody in 3% BSA-PBS and incubated overnight at 4 °C in a humidified chamber. Cells were washed with PBST and incubated with a AREX® Fluor 488 -conjugated secondary antibody (green) in PBS at room temperature in the dark. Phalloidin - AREX® Fluor 594 was used to stain Actin filaments (red). DAPI was used to stain the cell nuclei (blue).

STORAGE

Store at 4°C short term. For long term storage, store at -20°C, avoiding freeze/thaw cycles.

NOTE

For Research Use Only. Not for diagnostic, therapeutics, prophylactic or in vivo use.