

DATASHEET

Glypican-4 Rabbit Polyclonal Antibody

CAT. NO. APA15745

KEY FEATURES

Target	Glypican-4	Source / Host	Rabbit
Reactivity	Human, Mouse	Clonality	Polyclonal
Applications	WB	Conjugation	Unconjugated
Form / Buffer	Liquid in 0.42% Potassium phosphate, 0.87% Sodium chloride, pH 7.3, 30% glycerol, and 0.01% sodium azide.		Storage at -20°C

BACKGROUND

Cell surface proteoglycan that bears heparan sulfate. May be involved in the development of kidney tubules and of the central nervous system .

APPLICATION

To ensure optimal assay performance, AREX recommends conducting reagent titration tailored to each testing system for optimal detection results.

WB	1:500 - 1:1000
----	----------------

*Results are sample-specific. Please refer to your local assay conditions and test parameters for reference.

PRODUCT OVERVIEW

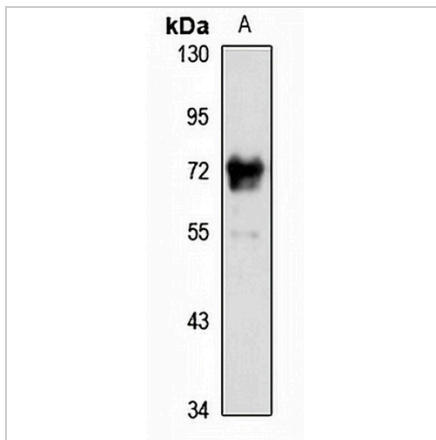
Description	Rabbit polyclonal antibody to Glypican-4
Specificity	Recognizes endogenous levels of Glypican-4 protein
Antibody Type	Primary antibody
Immunogen	Recombinant fusion protein of human Glypican-4. The exact sequence is proprietary.
Purification	The antibody was purified by immunogen affinity chromatography.
Molecular Weight	Predicted: 54; Observed: 70 kD
Form/Buffer	Liquid in 0.42% Potassium phosphate, 0.87% Sodium chloride, pH 7.3, 30% glycerol, and 0.01% sodium azide.
Alternative Names	Glypican-4; K-glypican
Gene Symbol	GPC4
Entrez Gene	2239(Human); 14735(Mouse)
SwissProt	O75487(Human); P51655(Mouse)

*AREX continuously optimizes our products. Webpage content may not reflect the latest updates. For inquiries, please contact info@arexbio.com or your local distributor.

*Clone Number, Reactivity, Source/Host and Clonality can be found in the product name and Key Features section above.

DATASHEET**Glypican-4 Rabbit Polyclonal Antibody**

CAT. NO. APA15745

DATA

Western blot analysis of Glypican-4 expression in A431 (A) whole cell lysates. (Predicted band size: 54; 62 kD; Observed band size: 70 kD)

STORAGE

Store at 4°C short term. For long term storage, store at -20°C, avoiding freeze/thaw cycles.

NOTE

For Research Use Only. Not for diagnostic, therapeutics, prophylactic or in vivo use.