

DATASHEET

GPIHBP1 Rabbit Polyclonal Antibody

CAT. NO. APA15748

KEY FEATURES

Target	GPIHBP1	Source / Host	Rabbit
Reactivity	Human, Mouse	Clonality	Polyclonal
Applications	WB	Conjugation	Unconjugated
Form / Buffer	Liquid in 0.42% Potassium phosphate, 0.87% Sodium chloride, pH 7.3, 30% glycerol, and 0.01% sodium azide.		Storage at -20°C

BACKGROUND

Mediates the transport of lipoprotein lipase LPL from the basolateral to the apical surface of endothelial cells in capillaries . Anchors LPL on the surface of endothelial cells in the lumen of blood capillaries . Protects LPL against loss of activity, and against ANGPTL4-mediated unfolding . Thereby, plays an important role in lipolytic processing of chylomicrons by LPL, triglyceride metabolism and lipid homeostasis . Binds chylomicrons and phospholipid particles that contain APOA5 . Binds high-density lipoprotein (HDL) and plays a role in the uptake of lipids from HDL .

APPLICATION

To ensure optimal assay performance, AREX recommends conducting reagent titration tailored to each testing system for optimal detection results.

WB	1:500 - 1:2000
----	----------------

*Results are sample-specific. Please refer to your local assay conditions and test parameters for reference.

PRODUCT OVERVIEW

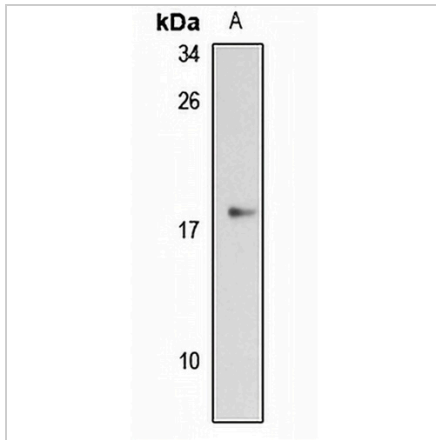
Description	Rabbit polyclonal antibody to GPIHBP1
Specificity	Recognizes endogenous levels of GPIHBP1 protein
Antibody Type	Primary antibody
Immunogen	Recombinant fusion protein of human GPIHBP1. The exact sequence is proprietary.
Purification	The antibody was purified by immunogen affinity chromatography.
Molecular Weight	Predicted: 19 kD; Observed: 20 kD
Form/Buffer	Liquid in 0.42% Potassium phosphate, 0.87% Sodium chloride, pH 7.3, 30% glycerol, and 0.01% sodium azide.
Alternative Names	HBP1; Glycosylphosphatidylinositol-anchored high density lipoprotein-binding protein 1; GPI-HBP1; GPI-anchored HDL-binding protein 1; High density lipoprotein-binding protein 1
Gene Symbol	GPIHBP1
Entrez Gene	338328(Human); 68453(Mouse)
SwissProt	Q8IV16(Human); Q9D1N2(Mouse)

*AREX continuously optimizes our products. Webpage content may not reflect the latest updates. For inquiries, please contact info@arexbio.com or your local distributor.

*Clone Number, Reactivity, Source/Host and Clonality can be found in the product name and Key Features section above.

DATASHEET**GPIHBP1 Rabbit Polyclonal Antibody**

CAT. NO. APA15748

DATA

Western blot analysis of GPIHBP1 expression in LO2 (A) whole cell lysates. (Predicted band size: 19 kD; Observed band size: 20 kD)

STORAGE

Store at 4°C short term. For long term storage, store at -20°C, avoiding freeze/thaw cycles.

NOTE

For Research Use Only. Not for diagnostic, therapeutics, prophylactic or in vivo use.