

DATASHEET

GPR37 Rabbit Polyclonal Antibody

CAT. NO. APA15754

KEY FEATURES

Target	GPR37	Source / Host	Rabbit
Reactivity	Human, Mouse, Rat	Clonality	Polyclonal
Applications	WB	Conjugation	Unconjugated
Form / Buffer	Liquid in 0.42% Potassium phosphate, 0.87% Sodium chloride, pH 7.3, 30% glycerol, and 0.01% sodium azide.		Storage at -20°C

BACKGROUND

G-protein-coupled receptor that plays a role in several physiological pathways such as resolution of inflammatory pain and oligodendrocyte differentiation. Acts as a receptor for several ligands including prosaposin, osteocalcin or neuroprotectin D1. Ligand binding induces endocytosis, followed by an ERK phosphorylation cascade. Acts as a receptor for osteocalcin (OCN) to regulate oligodendrocyte differentiation and central nervous system myelination. Mechanistically, plays a negative role in oligodendrocyte differentiation and myelination during development via activation of the ERK1/2 signaling pathway. Therefore, regulates the stability of myelin or resistance of myelin itself to demyelination.

APPLICATION

To ensure optimal assay performance, AREX recommends conducting reagent titration tailored to each testing system for optimal detection results.

WB	1:500 - 1:2000
----	----------------

*Results are sample-specific. Please refer to your local assay conditions and test parameters for reference.

PRODUCT OVERVIEW

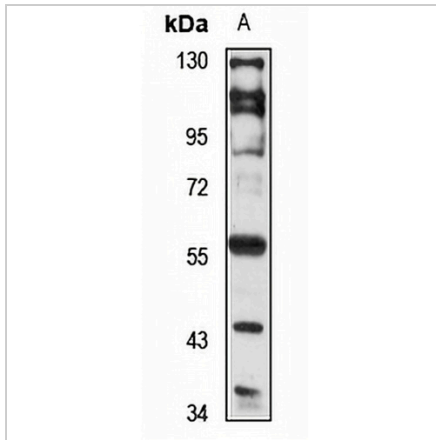
Description	Rabbit polyclonal antibody to GPR37
Specificity	Recognizes endogenous levels of GPR37 protein
Antibody Type	Primary antibody
Immunogen	Recombinant fusion protein of human GPR37. The exact sequence is proprietary.
Purification	The antibody was purified by immunogen affinity chromatography.
Molecular Weight	Predicted: 67 kD; Observed: 58 kD
Form/Buffer	Liquid in 0.42% Potassium phosphate, 0.87% Sodium chloride, pH 7.3, 30% glycerol, and 0.01% sodium azide.
Alternative Names	Prosaposin receptor GPR37; Endothelin B receptor-like protein 1; ETBR-LP-1; G-protein coupled receptor 37; Parkin-associated endothelin receptor-like receptor; PAELR
Gene Symbol	GPR37
Entrez Gene	2861(Human); 14763(Mouse); 117549(Rat)
SwissProt	O15354(Human); Q9QY42(Mouse); Q9QYC6(Rat)

*AREX continuously optimizes our products. Webpage content may not reflect the latest updates. For inquiries, please contact info@arexbio.com or your local distributor.

*Clone Number, Reactivity, Source/Host and Clonality can be found in the product name and Key Features section above.

DATASHEET**GPR37 Rabbit Polyclonal Antibody**

CAT. NO. APA15754

DATA

Western blot analysis of GPR37 expression in U87MG (A) whole cell lysates. (Predicted band size: 67 kD; Observed band size: 58 kD)

STORAGE

Store at 4°C short term. For long term storage, store at -20°C, avoiding freeze/thaw cycles.

NOTE

For Research Use Only. Not for diagnostic, therapeutics, prophylactic or in vivo use.