

DATASHEET

GPR4 Rabbit Polyclonal Antibody

CAT. NO. APA15755

KEY FEATURES

Target	GPR4	Source / Host	Rabbit
Reactivity	Human, Rat	Clonality	Polyclonal
Applications	WB	Conjugation	Unconjugated
Form / Buffer	Liquid in 0.42% Potassium phosphate, 0.87% Sodium chloride, pH 7.3, 30% glycerol, and 0.01% sodium azide.		Storage at -20°C

BACKGROUND

Proton-sensing G-protein coupled receptor activated by extracellular pH, which is required to monitor pH changes and generate adaptive reactions . Activated by an optimal pH of 6.8-7.2 . Ligand binding causes a conformation change that triggers signaling via guanine nucleotide-binding proteins (G proteins) and modulates the activity of downstream effectors, such as adenylate cyclase . GPR4 is mainly coupled to G(s) G proteins and mediates activation of adenylate cyclase activity . May also couple with G(i), G(q) and G(12)/G(13) G proteins . Acts as a key regulator of respiratory sensitivity to CO₂/H(+) in brain retrotrapezoid nucleus neurons: acts by mediating detection of protons generated by the formation of carbonic acid in the blood, an important mechanism to impulse to breathe .

APPLICATION

To ensure optimal assay performance, AREX recommends conducting reagent titration tailored to each testing system for optimal detection results.

WB	1:500 - 1:2000
----	----------------

*Results are sample-specific. Please refer to your local assay conditions and test parameters for reference.

PRODUCT OVERVIEW

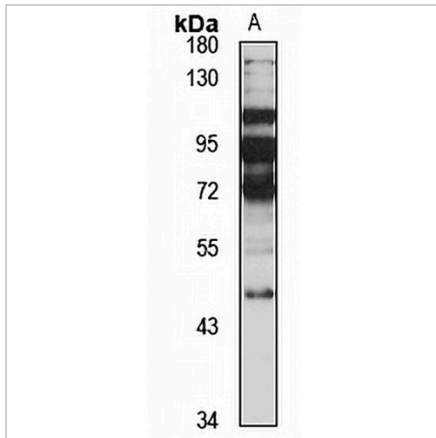
Description	Rabbit polyclonal antibody to GPR4
Specificity	Recognizes endogenous levels of GPR4 protein
Antibody Type	Primary antibody
Immunogen	Recombinant fusion protein of human GPR4. The exact sequence is proprietary.
Purification	The antibody was purified by immunogen affinity chromatography.
Molecular Weight	Predicted: 40 kD; Observed: 45 kD
Form/Buffer	Liquid in 0.42% Potassium phosphate, 0.87% Sodium chloride, pH 7.3, 30% glycerol, and 0.01% sodium azide.
Alternative Names	GPR19; G-protein coupled receptor 4; G-protein coupled receptor 19
Gene Symbol	GPR4
Entrez Gene	2828(Human); 308408(Rat)
SwissProt	P46093(Human); Q4KLH9(Rat)

*AREX continuously optimizes our products. Webpage content may not reflect the latest updates. For inquiries, please contact info@arexbio.com or your local distributor.

*Clone Number, Reactivity, Source/Host and Clonality can be found in the product name and Key Features section above.

DATASHEET**GPR4 Rabbit Polyclonal Antibody**

CAT. NO. APA15755

DATA

Western blot analysis of GPR4 expression in Raji (A) whole cell lysates. (Predicted band size: 40 kD; Observed band size: 45 kD)

STORAGE

Store at 4°C short term. For long term storage, store at -20°C, avoiding freeze/thaw cycles.

NOTE

For Research Use Only. Not for diagnostic, therapeutics, prophylactic or in vivo use.