

DATASHEET

GPR45 Rabbit Polyclonal Antibody

CAT. NO. APA15756

KEY FEATURES

Target	GPR45	Source / Host	Rabbit
Reactivity	Human	Clonality	Polyclonal
Applications	WB	Conjugation	Unconjugated
Form / Buffer	Liquid in 0.42% Potassium phosphate, 0.87% Sodium chloride, pH 7.3, 30% glycerol, and 0.01% sodium azide.		Storage at -20°C

BACKGROUND

Orphan receptor. May play a role in brain function.

APPLICATION

To ensure optimal assay performance, AREX recommends conducting reagent titration tailored to each testing system for optimal detection results.

WB	1:500 - 1:2000
----	----------------

*Results are sample-specific. Please refer to your local assay conditions and test parameters for reference.

PRODUCT OVERVIEW

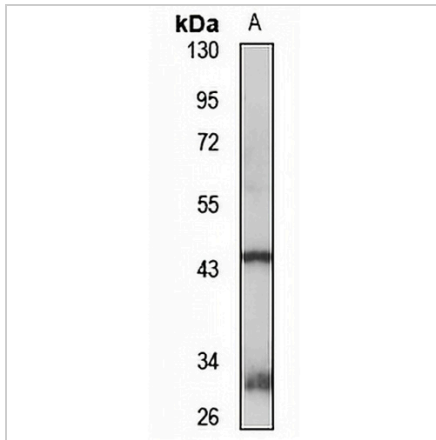
Description	Rabbit polyclonal antibody to GPR45
Specificity	Recognizes endogenous levels of GPR45 protein
Antibody Type	Primary antibody
Immunogen	KLH-conjugated synthetic peptide of human GPR45. The exact sequence is proprietary.
Purification	The antibody was purified by immunogen affinity chromatography.
Molecular Weight	Predicted: 41 kD; Observed: 45 kD
Form/Buffer	Liquid in 0.42% Potassium phosphate, 0.87% Sodium chloride, pH 7.3, 30% glycerol, and 0.01% sodium azide.
Alternative Names	Probable G-protein coupled receptor 45; PSP24-1; PSP24-alpha
Gene Symbol	GPR45
Entrez Gene	11250(Human)
SwissProt	Q9Y5Y3(Human)

*AREX continuously optimizes our products. Webpage content may not reflect the latest updates. For inquiries, please contact info@arexbio.com or your local distributor.

*Clone Number, Reactivity, Source/Host and Clonality can be found in the product name and Key Features section above.

DATASHEET**GPR45 Rabbit Polyclonal Antibody**

CAT. NO. APA15756

DATA

Western blot analysis of GPR45 expression in SHSY5Y (A) whole cell lysates. (Predicted band size: 41 kD; Observed band size: 45 kD)

STORAGE

Store at 4°C short term. For long term storage, store at -20°C, avoiding freeze/thaw cycles.

NOTE

For Research Use Only. Not for diagnostic, therapeutics, prophylactic or in vivo use.