

DATASHEET

GPx-2 Rabbit Polyclonal Antibody

CAT. NO. APA15759

KEY FEATURES

Target	GPx-2	Source / Host	Rabbit
Reactivity	Human, Mouse, Rat	Clonality	Polyclonal
Applications	WB, IHC	Conjugation	Unconjugated
Form / Buffer	Liquid in 0.42% Potassium phosphate, 0.87% Sodium chloride, pH 7.3, 30% glycerol, and 0.01% sodium azide.		Storage at -20°C

BACKGROUND

Catalyzes the reduction of hydroperoxides in a glutathione-dependent manner thus regulating cellular redox homeostasis . Can reduce small soluble hydroperoxides such as H₂O₂, cumene hydroperoxide and tert-butyl hydroperoxide, as well as several fatty acid-derived hydroperoxides . Cannot reduce phosphatidylcholine hydroperoxide .

APPLICATION

To ensure optimal assay performance, AREX recommends conducting reagent titration tailored to each testing system for optimal detection results.

WB	1:500 - 1:2000
IHC	1:50 - 1:200

*Results are sample-specific. Please refer to your local assay conditions and test parameters for reference.

PRODUCT OVERVIEW

Description	Rabbit polyclonal antibody to GPx-2
Specificity	Recognizes endogenous levels of GPx-2 protein
Antibody Type	Primary antibody
Immunogen	Recombinant fusion protein of human GPx-2. The exact sequence is proprietary.
Purification	The antibody was purified by immunogen affinity chromatography.
Molecular Weight	Predicted: 21 kD; Observed: 21 kD
Form/Buffer	Liquid in 0.42% Potassium phosphate, 0.87% Sodium chloride, pH 7.3, 30% glycerol, and 0.01% sodium azide.
Alternative Names	Glutathione peroxidase 2; GPx-2; GSHPx-2; Gastrointestinal glutathione peroxidase; Glutathione peroxidase-gastrointestinal; GPx-GI; GSHPx-GI; Glutathione peroxidase-related protein 2; GPRP-2
Gene Symbol	GPX2
Entrez Gene	2877(Human); 14776(Mouse)
SwissProt	P18283(Human); Q9JHC0(Mouse); P83645(Rat)

*AREX continuously optimizes our products. Webpage content may not reflect the latest updates. For inquiries, please contact info@arexbio.com or your local distributor.

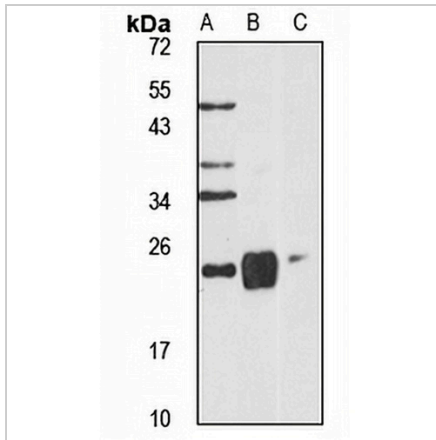
*Clone Number, Reactivity, Source/Host and Clonality can be found in the product name and Key Features section above.

DATASHEET

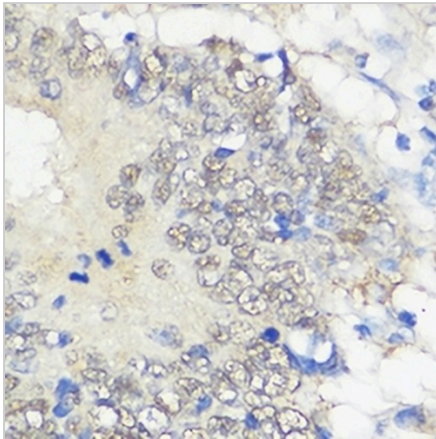
GPx-2 Rabbit Polyclonal Antibody

CAT. NO. APA15759

DATA



Western blot analysis of GPx-2 expression in HepG2 (A), mouse stomach (B), rat small intestine (C) whole cell lysates. (Predicted band size: 21 kD; Observed band size: 21 kD)



Immunohistochemical analysis of GPx-2 staining in human colon cancer formalin fixed paraffin embedded tissue section. The section was pre-treated using heat mediated antigen retrieval with sodium citrate buffer (pH 6.0). The section was then incubated with the antibody at room temperature and detected using an HRP conjugated compact polymer system. DAB was used as the chromogen. The section was then counterstained with haematoxylin and mounted with DPX.

STORAGE

Store at 4°C short term. For long term storage, store at -20°C, avoiding freeze/thaw cycles.

NOTE

For Research Use Only. Not for diagnostic, therapeutics, prophylactic or in vivo use.