

DATASHEET

Gremlin-1 Rabbit Polyclonal Antibody

CAT. NO. APA15763

KEY FEATURES

Target	Gremlin-1	Source / Host	Rabbit
Reactivity	Human, Mouse, Rat	Clonality	Polyclonal
Applications	WB	Conjugation	Unconjugated
Form / Buffer	Liquid in 0.42% Potassium phosphate, 0.87% Sodium chloride, pH 7.3, 30% glycerol, and 0.01% sodium azide.		Storage at-20°C

BACKGROUND

Cytokine that may play an important role during carcinogenesis and metanephric kidney organogenesis, as a BMP antagonist required for early limb outgrowth and patterning in maintaining the FGF4-SHH feedback loop. Down-regulates the BMP4 signaling in a dose-dependent manner. Antagonist of BMP2; inhibits BMP2-mediated differentiation of osteoblasts (in vitro). Acts as inhibitor of monocyte chemotaxis. Can inhibit the growth or viability of normal cells but not transformed cells when is overexpressed.

APPLICATION

To ensure optimal assay performance, AREX recommends conducting reagent titration tailored to each testing system for optimal detection results.

WB	1:500 - 1:2000
----	----------------

*Results are sample-specific. Please refer to your local assay conditions and test parameters for reference.

PRODUCT OVERVIEW

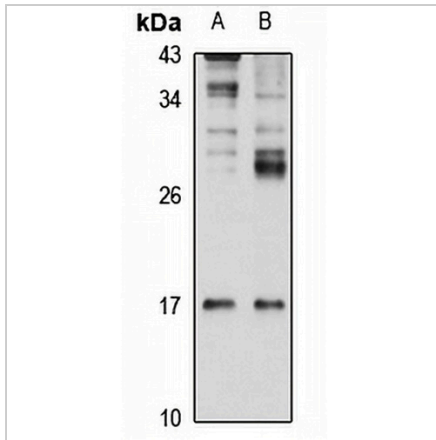
Description	Rabbit polyclonal antibody to Gremlin-1
Specificity	Recognizes endogenous levels of Gremlin-1 protein
Antibody Type	Primary antibody
Immunogen	Recombinant fusion protein of human Gremlin-1. The exact sequence is proprietary.
Purification	The antibody was purified by immunogen affinity chromatography.
Molecular Weight	Predicted: 16; Observed: 16 kD
Form/Buffer	Liquid in 0.42% Potassium phosphate, 0.87% Sodium chloride, pH 7.3, 30% glycerol, and 0.01% sodium azide.
Alternative Names	CKTSF1B1; DAND2; DRM; Gremlin-1; Cell proliferation-inducing gene 2 protein; Cysteine knot superfamily 1 BMP antagonist 1; DAN domain family member 2; Down-regulated in Mos-transformed cells protein; Increased in high glucose protein 2; IHG-2
Gene Symbol	GREM1
Entrez Gene	26585(Human); 23892(Mouse); 50566(Rat)
SwissProt	O60565(Human); O70326(Mouse); O35793(Rat)

*AREX continuously optimizes our products. Webpage content may not reflect the latest updates. For inquiries, please contact info@arexbio.com or your local distributor.

*Clone Number, Reactivity, Source/Host and Clonality can be found in the product name and Key Features section above.

DATASHEET**Gremlin-1 Rabbit Polyclonal Antibody**

CAT. NO. APA15763

DATA

Western blot analysis of Gremlin-1 expression in HT29 (A), A431 (B) whole cell lysates. (Predicted band size: 16; 20 kD; Observed band size: 16 kD)

STORAGE

Store at 4°C short term. For long term storage, store at -20°C, avoiding freeze/thaw cycles.

NOTE

For Research Use Only. Not for diagnostic, therapeutics, prophylactic or in vivo use.