

**DATASHEET**

**GRHL2 Rabbit Polyclonal Antibody**

CAT. NO. APA15764

**KEY FEATURES**

Target	GRHL2	Source / Host	Rabbit
Reactivity	Human	Clonality	Polyclonal
Applications	WB	Conjugation	Unconjugated
Form / Buffer	Liquid in 0.42% Potassium phosphate, 0.87% Sodium chloride, pH 7.3, 30% glycerol, and 0.01% sodium azide.		Storage at -20°C

**BACKGROUND**

Transcription factor playing an important role in primary neurulation and in epithelial development . Binds directly to the consensus DNA sequence 5'-AACCGTT-3' acting as an activator and repressor on distinct target genes . During embryogenesis, plays unique and cooperative roles with GRHL3 in establishing distinct zones of primary neurulation. Essential for closure 3 (rostral end of the forebrain), functions cooperatively with GRHL3 in closure 2 (forebrain/midbrain boundary) and posterior neuropore closure . Regulates epithelial morphogenesis acting as a target gene-associated transcriptional activator of apical junctional complex . components. Up-regulates of CLDN3 and CLDN4, as well as of RAB25, which increases the CLDN4 protein and its localization at tight junctions .

**APPLICATION**

To ensure optimal assay performance, AREX recommends conducting reagent titration tailored to each testing system for optimal detection results.

WB	1:500 - 1:2000
----	----------------

\*Results are sample-specific. Please refer to your local assay conditions and test parameters for reference.

**PRODUCT OVERVIEW**

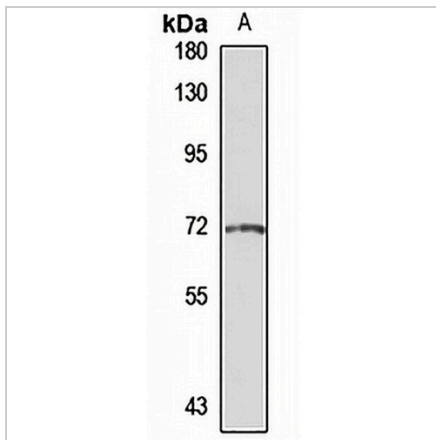
Description	Rabbit polyclonal antibody to GRHL2
Specificity	Recognizes endogenous levels of GRHL2 protein
Antibody Type	Primary antibody
Immunogen	Recombinant fusion protein of human GRHL2. The exact sequence is proprietary.
Purification	The antibody was purified by immunogen affinity chromatography.
Molecular Weight	Predicted: 69; Observed: 71 kD
Form/Buffer	Liquid in 0.42% Potassium phosphate, 0.87% Sodium chloride, pH 7.3, 30% glycerol, and 0.01% sodium azide.
Alternative Names	BOM; TFCP2L3; Grainyhead-like protein 2 homolog; Brother of mammalian grainyhead; Transcription factor CP2-like 3
Gene Symbol	GRHL2
Entrez Gene	79977(Human)
SwissProt	Q6ISB3(Human)

\*AREX continuously optimizes our products. Webpage content may not reflect the latest updates. For inquiries, please contact [info@arexbio.com](mailto:info@arexbio.com) or your local distributor.

\*Clone Number, Reactivity, Source/Host and Clonality can be found in the product name and Key Features section above.

**DATASHEET****GRHL2 Rabbit Polyclonal Antibody**

CAT. NO. APA15764

**DATA**

Western blot analysis of GRHL2 expression in SHSY5Y (A) whole cell lysates. (Predicted band size: 69; 71 kD; Observed band size: 71 kD)

**STORAGE**

Store at 4°C short term. For long term storage, store at -20°C, avoiding freeze/thaw cycles.

**NOTE**

For Research Use Only. Not for diagnostic, therapeutics, prophylactic or in vivo use.