

DATASHEET

GRK4 Rabbit Polyclonal Antibody

CAT. NO. APA15768

KEY FEATURES

Target	GRK4	Source / Host	Rabbit
Reactivity	Human, Mouse, Rat	Clonality	Polyclonal
Applications	WB	Conjugation	Unconjugated
Form / Buffer	Liquid in 0.42% Potassium phosphate, 0.87% Sodium chloride, pH 7.3, 30% glycerol, and 0.01% sodium azide.		Storage at -20°C

BACKGROUND

Specifically phosphorylates the activated forms of G protein-coupled receptors. GRK4-alpha can phosphorylate rhodopsin and its activity is inhibited by calmodulin; the other three isoforms do not phosphorylate rhodopsin and do not interact with calmodulin. GRK4-alpha and GRK4-gamma phosphorylate DRD3. Phosphorylates ADRB2.

APPLICATION

To ensure optimal assay performance, AREX recommends conducting reagent titration tailored to each testing system for optimal detection results.

WB	1:500 - 1:2000
----	----------------

*Results are sample-specific. Please refer to your local assay conditions and test parameters for reference.

PRODUCT OVERVIEW

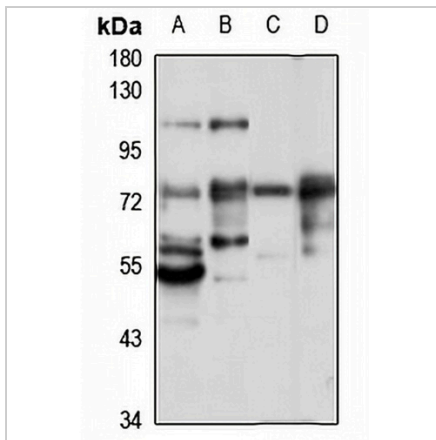
Description	Rabbit polyclonal antibody to GRK4
Specificity	Recognizes endogenous levels of GRK4 protein
Antibody Type	Primary antibody
Immunogen	Recombinant fusion protein of human GRK4. The exact sequence is proprietary.
Purification	The antibody was purified by immunogen affinity chromatography.
Molecular Weight	Predicted: 57; Observed: 72 kD
Form/Buffer	Liquid in 0.42% Potassium phosphate, 0.87% Sodium chloride, pH 7.3, 30% glycerol, and 0.01% sodium azide.
Alternative Names	GPRK2L; GPRK4; G protein-coupled receptor kinase 4; G protein-coupled receptor kinase GRK4; ITI1
Gene Symbol	GRK4
Entrez Gene	2868(Human); 14772(Mouse); 59077(Rat)
SwissProt	P32298(Human); O70291(Mouse); P70507(Rat)

*AREX continuously optimizes our products. Webpage content may not reflect the latest updates. For inquiries, please contact info@arexbio.com or your local distributor.

*Clone Number, Reactivity, Source/Host and Clonality can be found in the product name and Key Features section above.

DATASHEET**GRK4 Rabbit Polyclonal Antibody**

CAT. NO. APA15768

DATA

Western blot analysis of GRK4 expression in BT474 (A), HeLa (B), mouse lung (C), rat brain (D) whole cell lysates. (Predicted band size: 57; 61; 63; 66 kD; Observed band size: 72 kD)

STORAGE

Store at 4°C short term. For long term storage, store at -20°C, avoiding freeze/thaw cycles.

NOTE

For Research Use Only. Not for diagnostic, therapeutics, prophylactic or in vivo use.