

DATASHEET

mGLUR2 Rabbit Polyclonal Antibody

CAT. NO. APA15769

KEY FEATURES

Target	mGLUR2	Source / Host	Rabbit
Reactivity	Human, Mouse, Rat	Clonality	Polyclonal
Applications	WB	Conjugation	Unconjugated
Form / Buffer	Liquid in 0.42% Potassium phosphate, 0.87% Sodium chloride, pH 7.3, 30% glycerol, and 0.01% sodium azide.		Storage at -20°C

BACKGROUND

Dimeric G protein-coupled receptor which is activated by the excitatory neurotransmitter L-glutamate. Plays critical roles in modulating synaptic transmission and neuronal excitability. Upon activation by glutamate, inhibits presynaptic calcium channels, reducing further glutamate release and dampening excitatory signaling. Mechanistically, ligand binding causes a conformation change that triggers signaling via guanine nucleotide-binding proteins (G proteins) and modulates the activity of down-stream effectors, such as adenylate cyclase. May mediate suppression of neurotransmission or may be involved in synaptogenesis or synaptic stabilization.

APPLICATION

To ensure optimal assay performance, AREX recommends conducting reagent titration tailored to each testing system for optimal detection results.

WB	1:500 - 1:2000
----	----------------

*Results are sample-specific. Please refer to your local assay conditions and test parameters for reference.

PRODUCT OVERVIEW

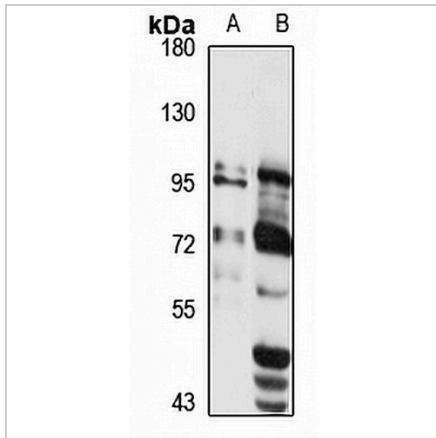
Description	Rabbit polyclonal antibody to mGLUR2
Specificity	Recognizes endogenous levels of mGLUR2 protein
Antibody Type	Primary antibody
Immunogen	Recombinant fusion protein of human mGLUR2. The exact sequence is proprietary.
Purification	The antibody was purified by immunogen affinity chromatography.
Molecular Weight	Predicted: 95 kD; Observed: 95 kD
Form/Buffer	Liquid in 0.42% Potassium phosphate, 0.87% Sodium chloride, pH 7.3, 30% glycerol, and 0.01% sodium azide.
Alternative Names	GPRC1B; MGLUR2; Metabotropic glutamate receptor 2; mGluR2
Gene Symbol	GRM2
Entrez Gene	2912(Human); 108068(Mouse); 24415(Rat)
SwissProt	Q14416(Human); Q14BI2(Mouse); P31421(Rat)

*AREX continuously optimizes our products. Webpage content may not reflect the latest updates. For inquiries, please contact info@arexbio.com or your local distributor.

*Clone Number, Reactivity, Source/Host and Clonality can be found in the product name and Key Features section above.

DATASHEET**mGLUR2 Rabbit Polyclonal Antibody**

CAT. NO. APA15769

DATA

Western blot analysis of mGLUR2 expression in HeLa (A), mouse kidney (B) whole cell lysates. (Predicted band size: 95 kD; Observed band size: 95 kD)

STORAGE

Store at 4°C short term. For long term storage, store at -20°C, avoiding freeze/thaw cycles.

NOTE

For Research Use Only. Not for diagnostic, therapeutics, prophylactic or in vivo use.