

**DATASHEET**

**mGLUR3 Rabbit Polyclonal Antibody**

CAT. NO. APA15770

**KEY FEATURES**

|               |   |               |                     |
|---------------|---|---------------|---------------------|
| Target        | mGLUR3  | Source / Host | Rabbit              |
| Reactivity    | Human, Mouse  | Clonality     | Polyclonal          |
| Applications  | WB  | Conjugation   | Unconjugated        |
| Form / Buffer | Liquid in 0.42% Potassium phosphate, 0.87% Sodium chloride, pH 7.3, 30% glycerol, and 0.01% sodium azide. |               | Storage<br>at -20°C |

**BACKGROUND**

G-protein coupled receptor for glutamate. Ligand binding causes a conformation change that triggers signaling via guanine nucleotide-binding proteins (G proteins) and modulates the activity of down-stream effectors. Signaling inhibits adenylate cyclase activity.

**APPLICATION**

To ensure optimal assay performance, AREX recommends conducting reagent titration tailored to each testing system for optimal detection results.

|    |                |
|----|----------------|
| WB | 1:500 - 1:2000 |
|----|----------------|

\*Results are sample-specific. Please refer to your local assay conditions and test parameters for reference.

**PRODUCT OVERVIEW**

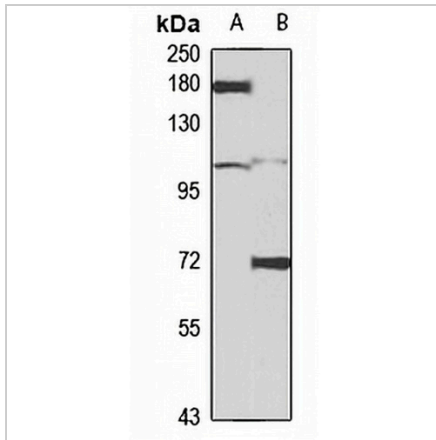
|                   |   |
|-------------------|---|
| Description       | Rabbit polyclonal antibody to mGLUR3  |
| Specificity       | Recognizes endogenous levels of mGLUR3 protein  |
| Antibody Type     | Primary antibody  |
| Immunogen         | Recombinant fusion protein of human mGLUR3. The exact sequence is proprietary.                            |
| Purification      | The antibody was purified by immunogen affinity chromatography.   |
| Molecular Weight  | Predicted: 98 kD; Observed: 100 kD  |
| Form/Buffer       | Liquid in 0.42% Potassium phosphate, 0.87% Sodium chloride, pH 7.3, 30% glycerol, and 0.01% sodium azide. |
| Alternative Names | GPRC1C; MGLUR3; Metabotropic glutamate receptor 3; mGluR3   |
| Gene Symbol       | GRM3  |
| Entrez Gene       | 2913(Human); 108069(Mouse)  |
| SwissProt         | Q14832(Human); Q9QYS2(Mouse)  |

\*AREX continuously optimizes our products. Webpage content may not reflect the latest updates. For inquiries, please contact [info@arexbio.com](mailto:info@arexbio.com) or your local distributor.

\*Clone Number, Reactivity, Source/Host and Clonality can be found in the product name and Key Features section above.

**DATASHEET****mGLUR3 Rabbit Polyclonal Antibody**

CAT. NO. APA15770

**DATA**

Western blot analysis of mGLUR3 expression in Raji (A), mouse brain (B) whole cell lysates. (Predicted band size: 98 kD; Observed band size: 100 kD)

**STORAGE**

Store at 4°C short term. For long term storage, store at -20°C, avoiding freeze/thaw cycles.

**NOTE**

For Research Use Only. Not for diagnostic, therapeutics, prophylactic or in vivo use.