

DATASHEET

GSDMD-CT Rabbit Polyclonal Antibody

CAT. NO. APA15772

KEY FEATURES

Target	GSDMD-CT	Source / Host	Rabbit
Reactivity	Human, Mouse	Clonality	Polyclonal
Applications	WB	Conjugation	Unconjugated
Form / Buffer	Liquid in 0.42% Potassium phosphate, 0.87% Sodium chloride, pH 7.3, 30% glycerol, and 0.01% sodium azide.		Storage at -20°C

BACKGROUND

Precursor of a pore-forming protein that plays a key role in host defense against pathogen infection and danger signals . This form constitutes the precursor of the pore-forming protein: upon cleavage, the released N-terminal moiety (Gasdermin-D, N-terminal) binds to membranes and forms pores, triggering pyroptosis .

APPLICATION

To ensure optimal assay performance, AREX recommends conducting reagent titration tailored to each testing system for optimal detection results.

WB	1:500 - 1:2000
----	----------------

*Results are sample-specific. Please refer to your local assay conditions and test parameters for reference.

PRODUCT OVERVIEW

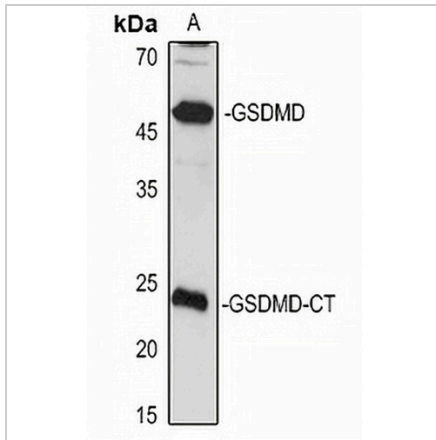
Description	Rabbit polyclonal antibody to GSDMD-CT
Specificity	Recognizes endogenous levels of GSDMD full length and C terminal protein
Antibody Type	Primary antibody
Immunogen	Recombinant fusion protein of human GSDMD-CT. The exact sequence is proprietary.
Purification	The antibody was purified by immunogen affinity chromatography.
Molecular Weight	Predicted: 53 kD; Observed: 22 kD
Form/Buffer	Liquid in 0.42% Potassium phosphate, 0.87% Sodium chloride, pH 7.3, 30% glycerol, and 0.01% sodium azide.
Alternative Names	DFNA5L; GSDMDC1; Gasdermin-D; Gasdermin domain-containing protein 1
Gene Symbol	GSDMD
Entrez Gene	79792(Human)
SwissProt	P57764(Human)

*AREX continuously optimizes our products. Webpage content may not reflect the latest updates. For inquiries, please contact info@arexbio.com or your local distributor.

*Clone Number, Reactivity, Source/Host and Clonality can be found in the product name and Key Features section above.

DATASHEET**GSDMD-CT Rabbit Polyclonal Antibody**

CAT. NO. APA15772

DATA

Western blot analysis of GSDMD-CT expression in THP1 (A) whole cell lysates. (Predicted band size: 53 kD; Observed band size: 22 kD)

STORAGE

Store at 4°C short term. For long term storage, store at -20°C, avoiding freeze/thaw cycles.

NOTE

For Research Use Only. Not for diagnostic, therapeutics, prophylactic or in vivo use.