

**DATASHEET**

**TF2A1 Rabbit Polyclonal Antibody**

CAT. NO. APA15778

**KEY FEATURES**

Target	TF2A1	Source / Host	Rabbit
Reactivity	Human, Mouse	Clonality	Polyclonal
Applications	WB	Conjugation	Unconjugated
Form / Buffer	Liquid in 0.42% Potassium phosphate, 0.87% Sodium chloride, pH 7.3, 30% glycerol, and 0.01% sodium azide.		Storage at -20°C

**BACKGROUND**

TFIIA is a component of the transcription machinery of RNA polymerase II and plays an important role in transcriptional activation. TFIIA in a complex with TBP mediates transcriptional activity.

**APPLICATION**

To ensure optimal assay performance, AREX recommends conducting reagent titration tailored to each testing system for optimal detection results.

WB	1:500 - 1:2000
----	----------------

\*Results are sample-specific. Please refer to your local assay conditions and test parameters for reference.

**PRODUCT OVERVIEW**

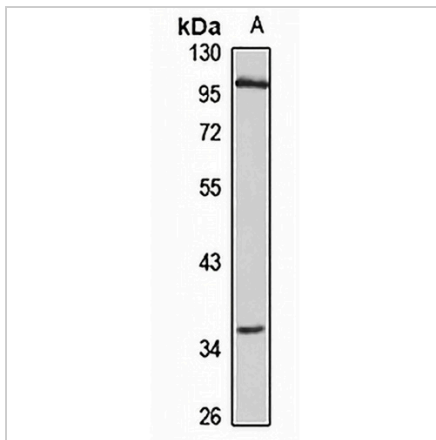
Description	Rabbit polyclonal antibody to TF2A1
Specificity	Recognizes endogenous levels of TF2A1 protein
Antibody Type	Primary antibody
Immunogen	Recombinant fusion protein of human TF2A1. The exact sequence is proprietary.
Purification	The antibody was purified by immunogen affinity chromatography.
Molecular Weight	Predicted: 37; Observed: 37 kD
Form/Buffer	Liquid in 0.42% Potassium phosphate, 0.87% Sodium chloride, pH 7.3, 30% glycerol, and 0.01% sodium azide.
Alternative Names	TF2A1; Transcription initiation factor IIA subunit 1; General transcription factor IIA subunit 1; TFIIA1; Transcription initiation factor TFIIA 42 kDa subunit; TFIIA-42
Gene Symbol	GTF2A1
Entrez Gene	2957(Human); 83602(Mouse)
SwissProt	P52655(Human); Q99PM3(Mouse)

\*AREX continuously optimizes our products. Webpage content may not reflect the latest updates. For inquiries, please contact [info@arexbio.com](mailto:info@arexbio.com) or your local distributor.

\*Clone Number, Reactivity, Source/Host and Clonality can be found in the product name and Key Features section above.

**DATASHEET****TF2A1 Rabbit Polyclonal Antibody**

CAT. NO. APA15778

**DATA**

Western blot analysis of TF2A1 expression in Raji (A) whole cell lysates. (Predicted band size: 37; 41 kD; Observed band size: 37 kD)

**STORAGE**

Store at 4°C short term. For long term storage, store at -20°C, avoiding freeze/thaw cycles.

**NOTE**

For Research Use Only. Not for diagnostic, therapeutics, prophylactic or in vivo use.